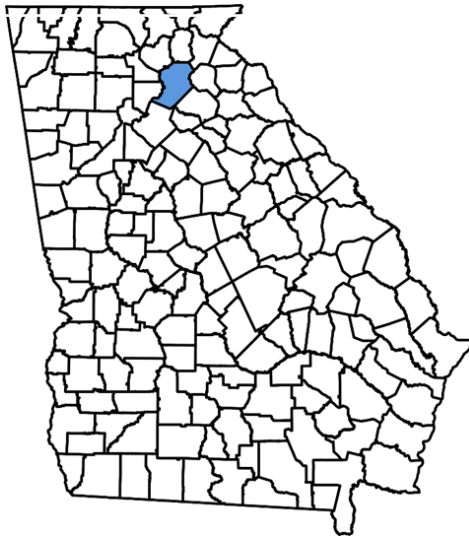


*GAINESVILLE-HALL METROPOLITAN
PLANNING ORGANIZATION
2022 Hall County Crash Profile*



**Prepared by the Gainesville-Hall Metropolitan Planning Organization
utilizing data collected from the
Georgia Electronic Accident Reporting System (GEARS)**



Table of Contents

Contents

Introduction.....	3
2021 Crash Data.....	4
Additional Crash Data.....	8
Six-Year Trends	15
Citations	16

Introduction



The Gainesville-Hall Metropolitan Planning Organization (GHMPO) is the federally designated transportation planning body in Northeast Georgia consisting of the Gainesville urbanized area, Hall County, and the western portion of Jackson County. GHMPO was formed on February 25, 2003, and is housed within the Hall County Planning Department.

The Georgia Department of Transportation (GDOT), jointly with the Governor's Office of Highway Safety, provides a statewide accident reporting database titled the Georgia Electronic Accident Reporting System (GEARS). Using GEARS, agencies across the state are able to electronically submit accident data that contains information such as number of injuries, number of fatalities, accident type, accident location, time of day, gender and age of the driver, and GPS coordinates. Reporting crashes electronically not only saves local agencies thousands of dollars a year but also provides transportation professionals valuable data that can be used to help identify high crash locations and areas that may require additional funding for safety and operational

improvements in the future.

GHMPO has produced multiple crash profiles in the past. The first report was created in 2008 and analyzed crash data between the years 2000 and 2007 in Hall County. A second report was created in 2016 and analyzed data from 2011 through 2015 in both Hall and Jackson Counties. A similar report was created in 2017 which analyzed data from 2012-2016. Since then, GHMPO has produced individual crash profiles on a yearly basis, thus far having produced crash profiles for 2018, 2019, 2020, and now 2021.

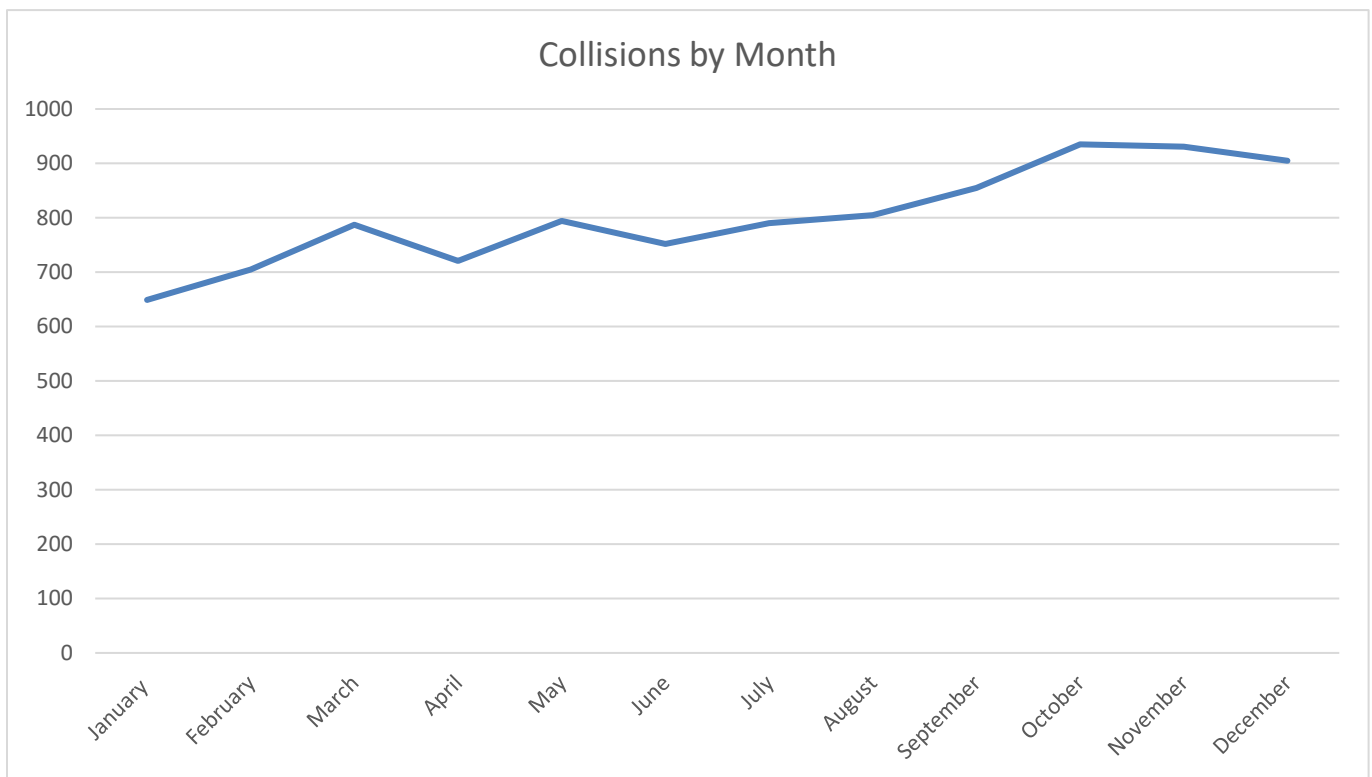


2021 Crash Data

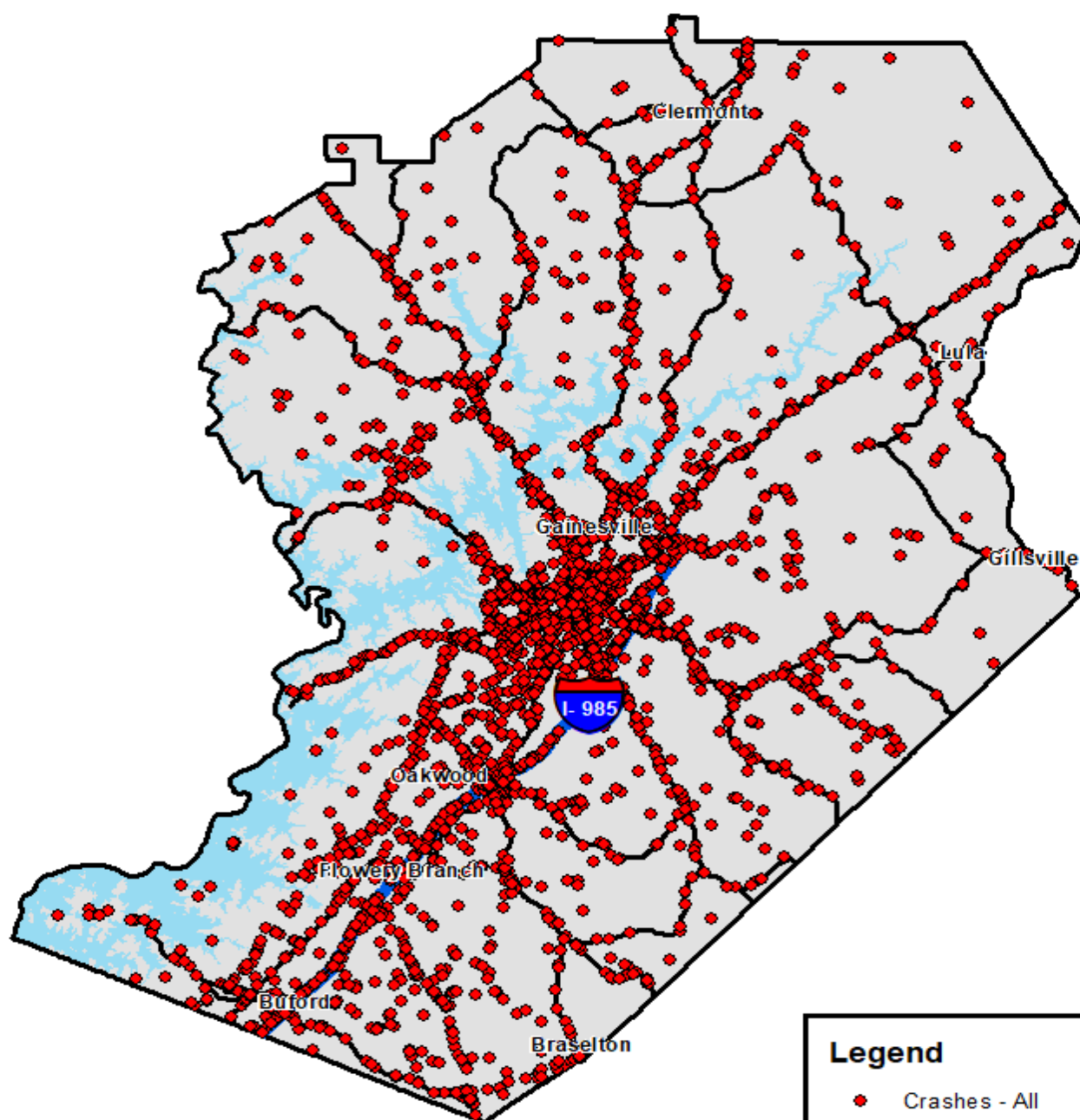
2021 Crash Summary	
Total Crashes:	9,629
Injury Crashes:	1,923
Total Injured:	2,839
Fatal Crashes:	25
Total Fatalities:	29
Commercial Vehicle Crashes:	322
Property Damage Crashes:	7,681
Private Property Crashes:	1910
Work Zone Crashes:	0
Hit and Run:	1259

The table to the left displays the total number of traffic collisions in Hall County in 2021, as well as the types of collisions that occurred, number of fatalities, and number of injuries.

The graph below displays month-over-month collisions in Hall County in 2021. The graph shows an upward trend towards the second half of the year, with peak collisions occurring in October.

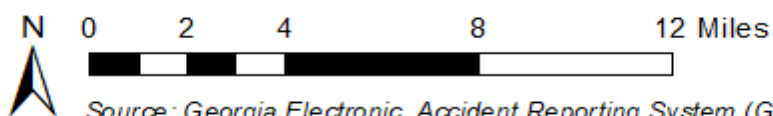


All Crashes in 2021



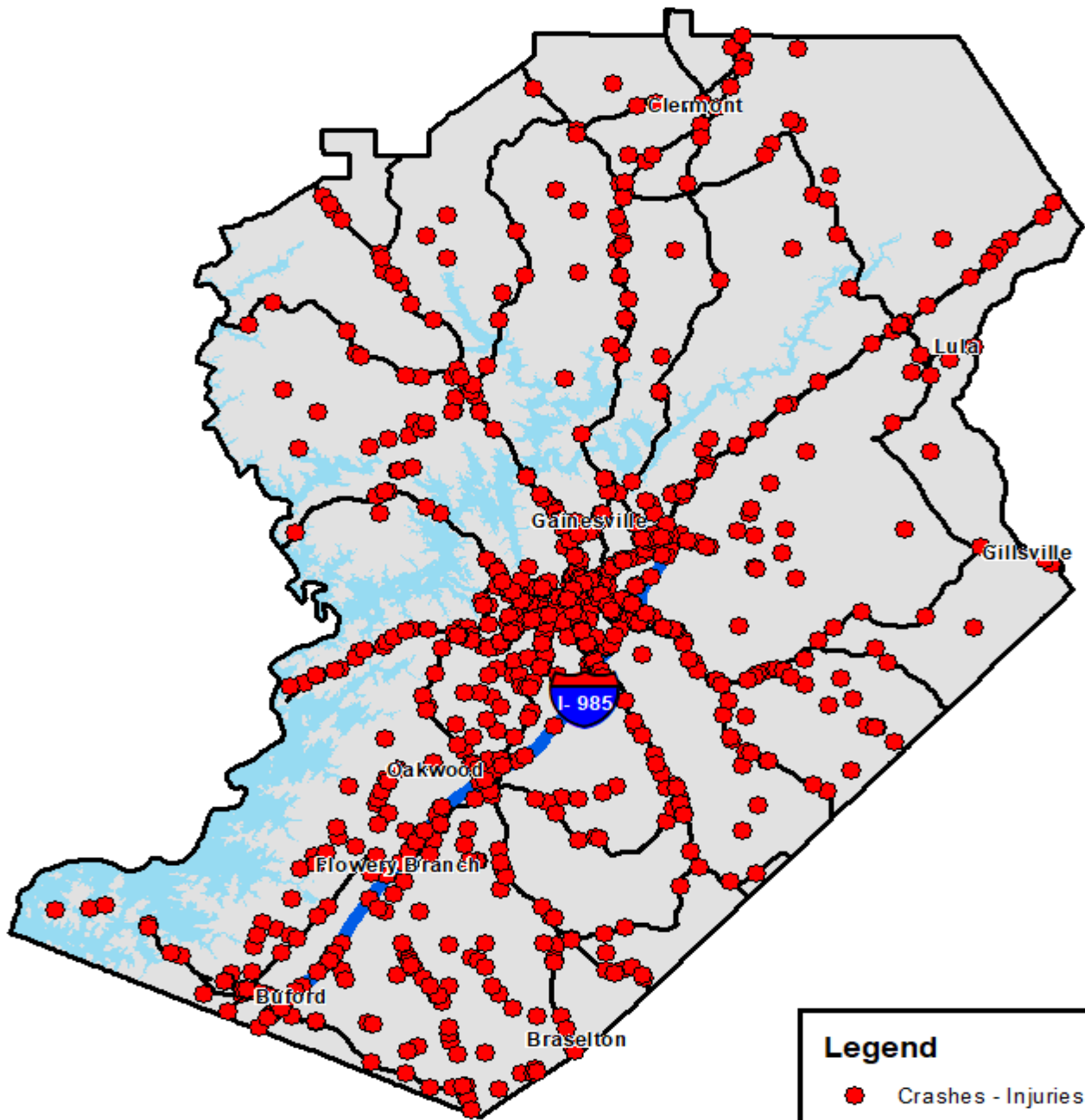
Legend

- Crashes - All
- I-985
- Main Roads
- Hall County Boundary
- Lake Lanier



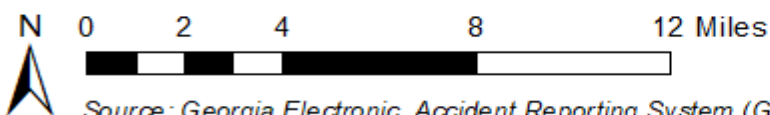
Source: Georgia Electronic Accident Reporting System (GEARS)

Injury Crashes in 2021



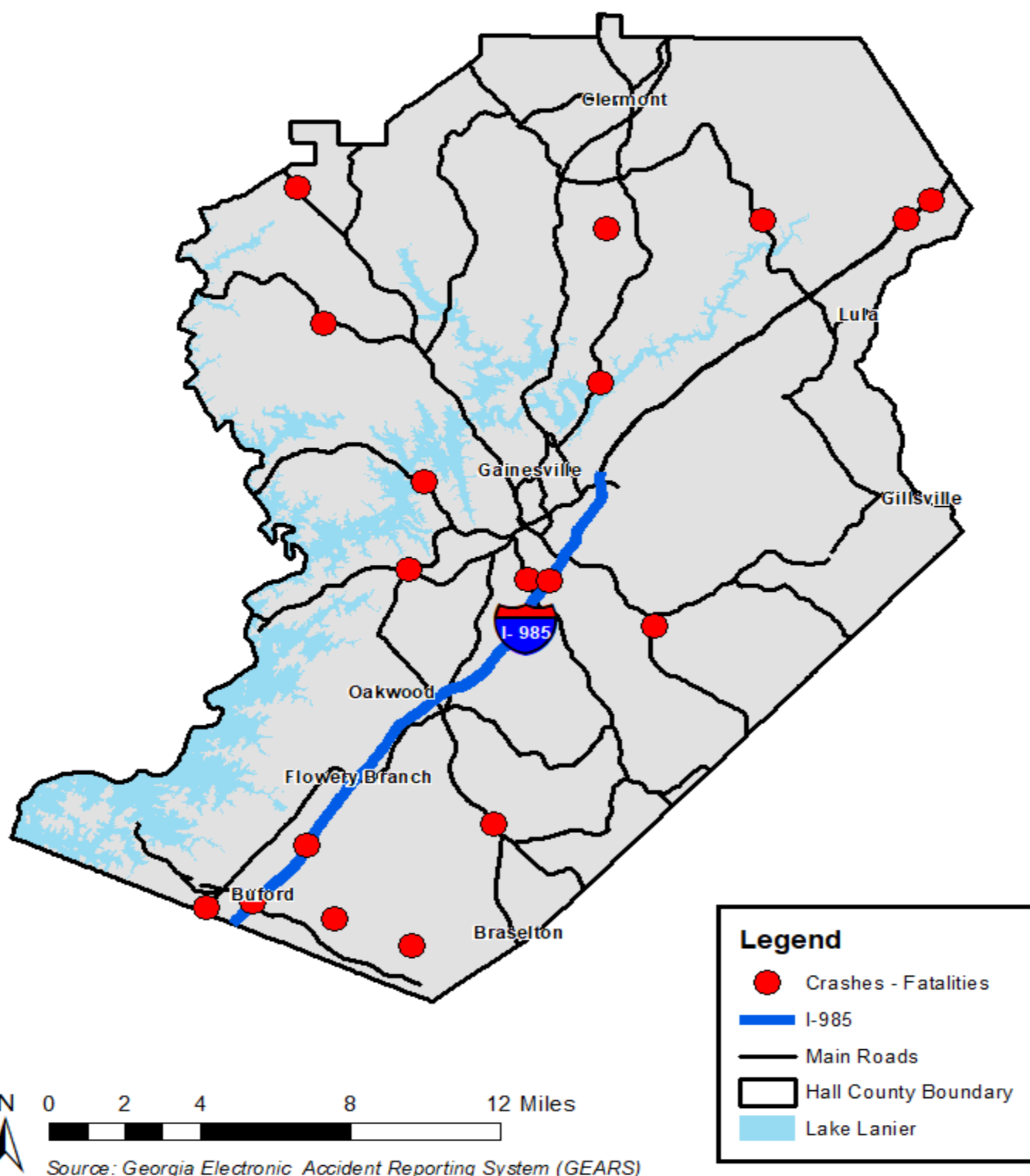
Legend

- Crashes - Injuries
- I-985
- Main Roads
- Hall County Boundary
- Lake Lanier



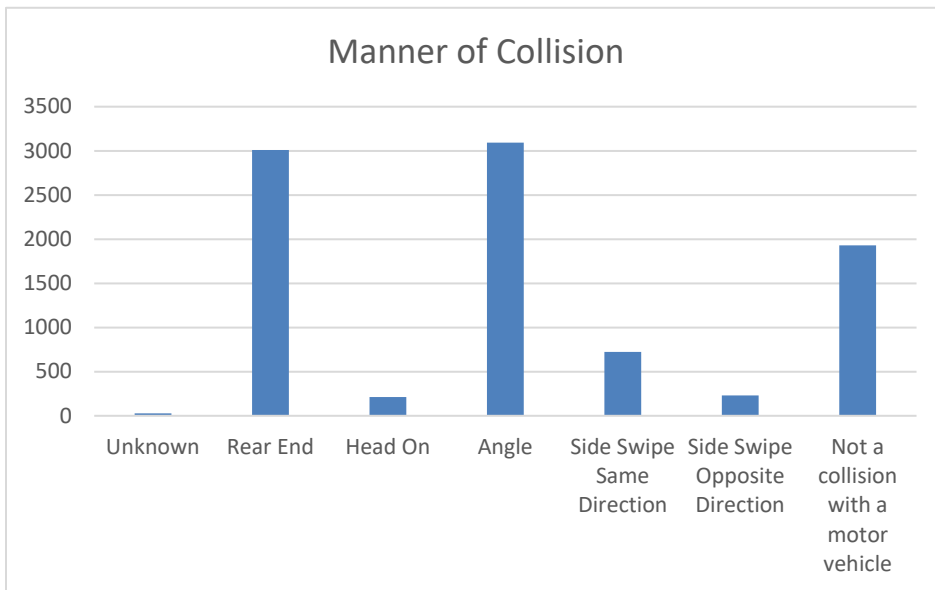
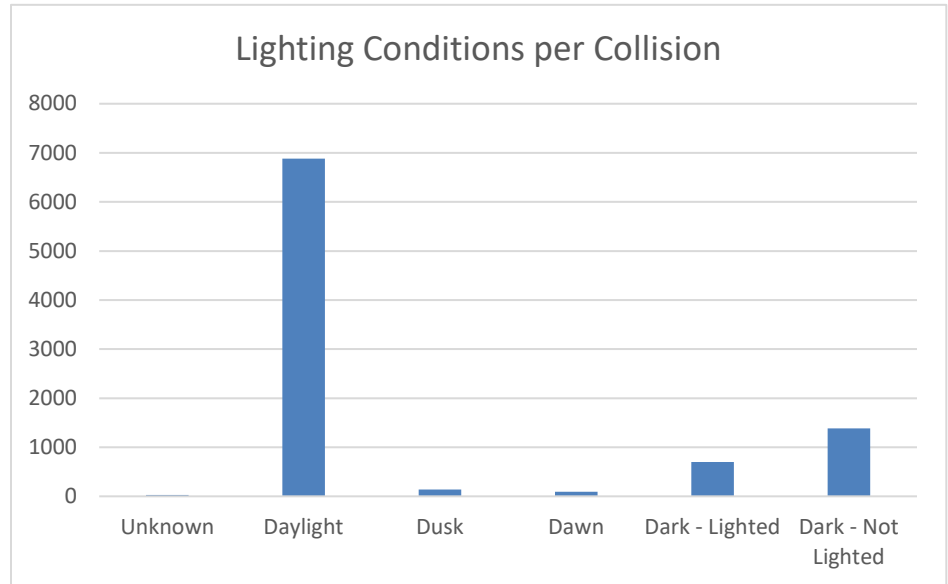
Source: Georgia Electronic Accident Reporting System (GEARS)

Fatal Crashes in 2021



Additional Crash Data

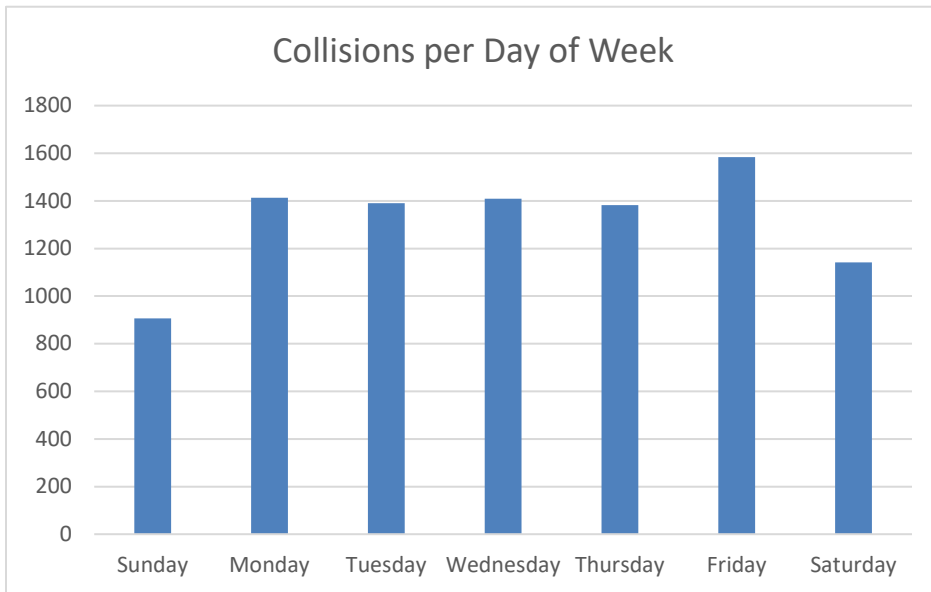
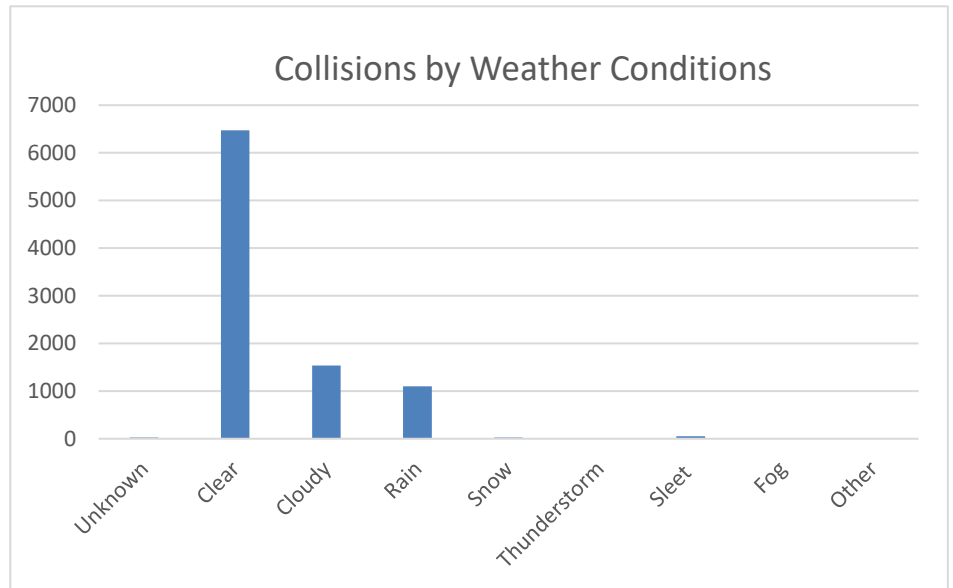
The graph to the right displays the **lighting conditions** of crashes in Hall County in 2021. As expected, a majority of the crashes occurred during daylight.



The graph to the left displays the **manner of all collisions** in Hall County in 2021. Rear End and Angle collisions were the vast majority of all collisions.

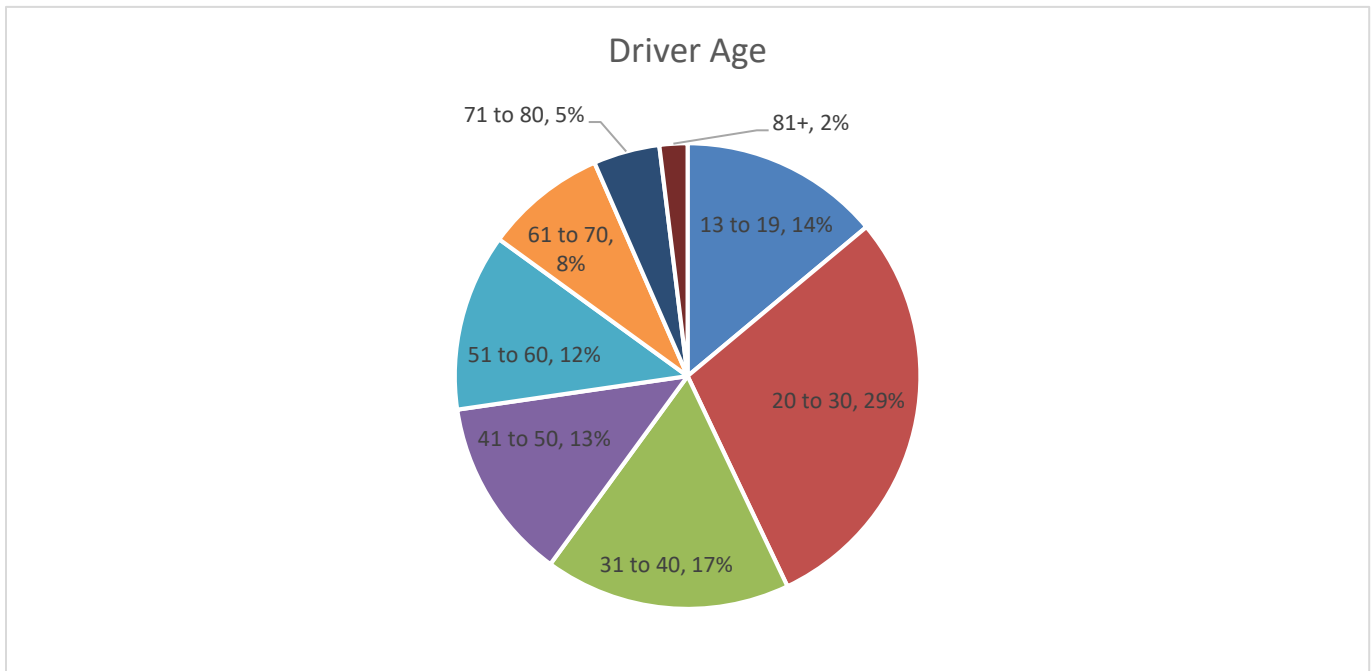
Additional Crash Data

The graph on the right shows the **weather conditions** of collisions in Hall County in 2021. The majority of these collisions occurred in clear weather, with a small minority occurring in severe weather, such as snow, thunderstorms, sleet, or fog.



The graph on the left shows the **day of the week** of each collision in Hall County in 2021. The collisions were evenly spread out throughout the week, with small dips in frequency on the weekend.

Additional Crash Data

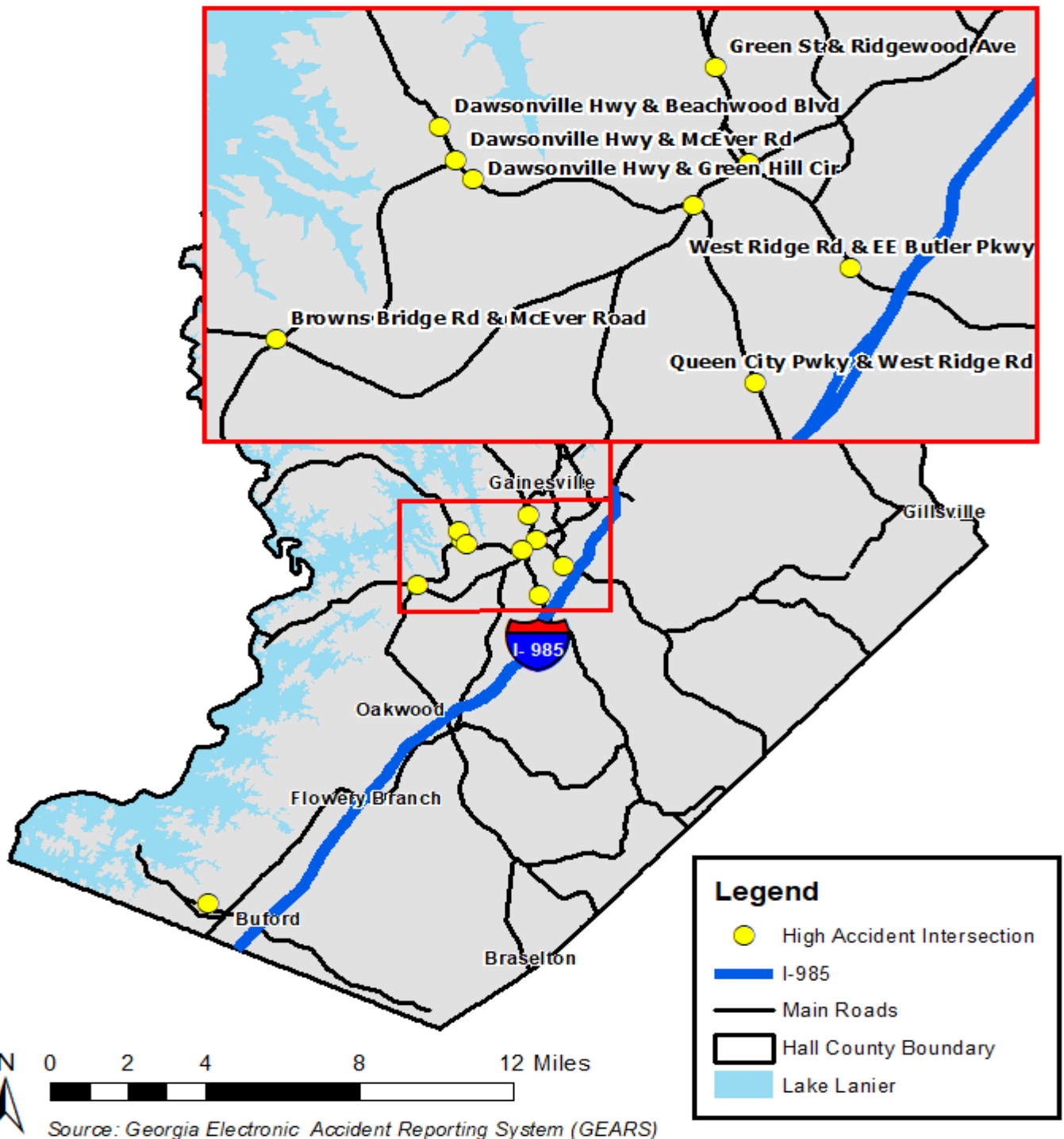


The chart above shows the **age of the drivers** involved in all collisions throughout Hall County in 2021. The highest percentage of drivers were from the 20 to 30 age bracket, followed by 31 to 40, and then 13 to 19.

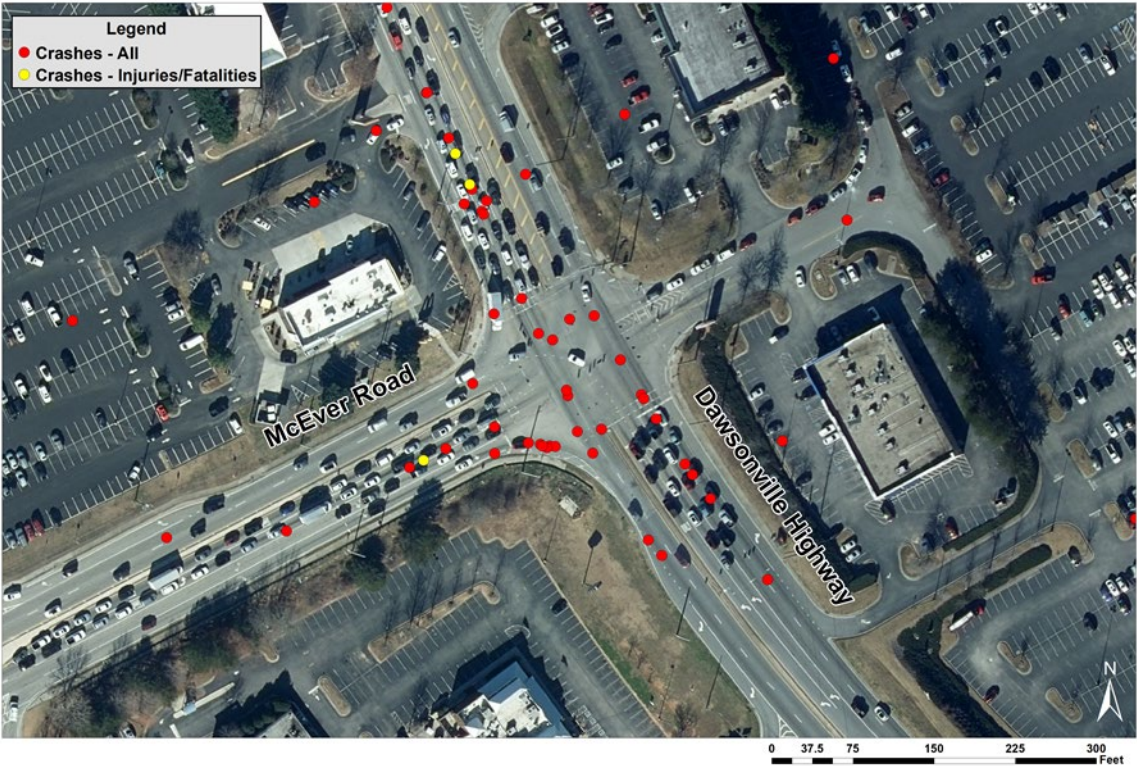
The table below shows the **intersections with the most collisions** reported in Hall County in 2021. The three intersections with the highest number of collisions are all along Dawsonville Highway.

High Accident Roads & Locations					
From: 1/1/2021 - 12/31/2021					
	Total Collisions	Total Fatal Collisions	Total Injury Collision	Number Killed	Number Injured
Dawsonville Hwy & McEver Road	109	0	14	0	23
Dawsonville Hwy & Beachwood Blvd	50	0	13	0	18
Dawsonville Hwy & Green Hill Circle	39	0	7	0	16
Browns Bridge Road & McEver Road	39	0	5	0	7
Green Street & Ridgewood Avenue	38	0	13	0	20
Queen City Parkway & W Ridge Rd	36	1	16	1	22
Jesse Jewell Parkway & EE Butler Parkway	36	0	4	0	5
EE Butler Parkway & W Ridge Road	35	0	12	0	19
John Morrow Jr Parkway & Jesse Jewell Parkway	28	0	6	0	6
McEver Road & Lanier Islands Parkway	27	0	6	0	8

High Accident Intersections



Intersection of McEver Road and Dawsonville Highway



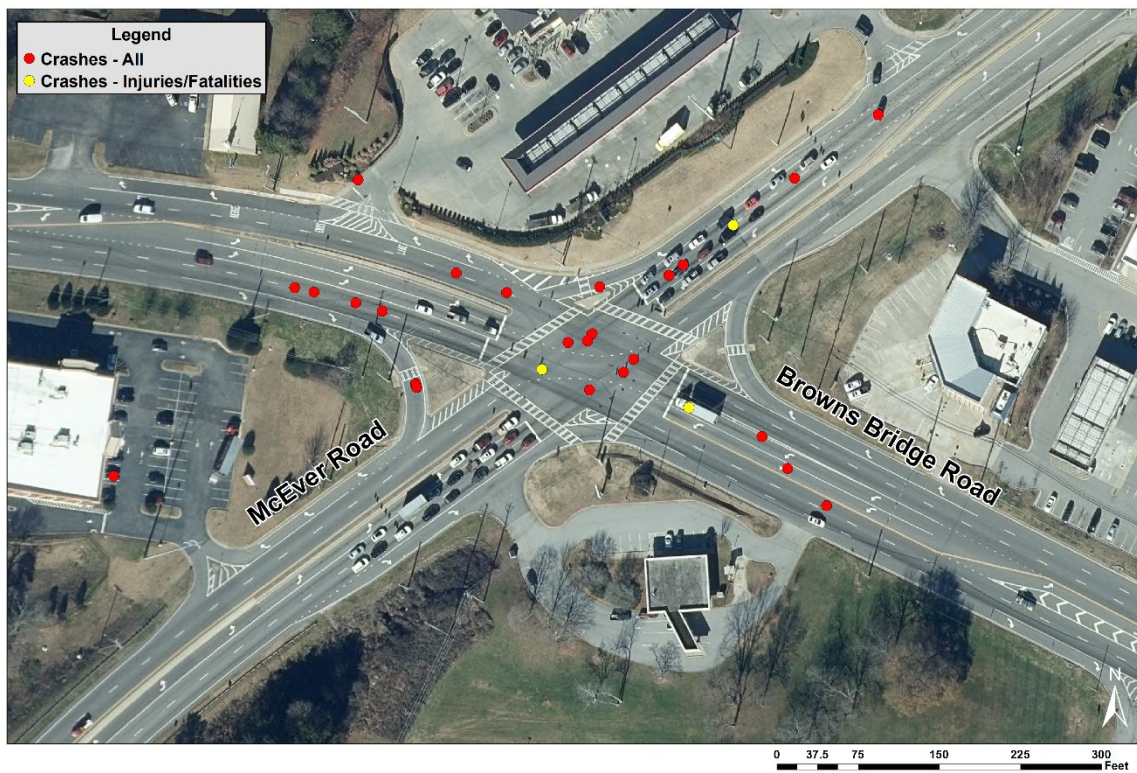
Intersection of Beechwood Boulevard and Dawsonville Highway



Intersection of Green Hill Circle and Dawsonville Highway



Intersection of McEver Road and Browns Bridge Road

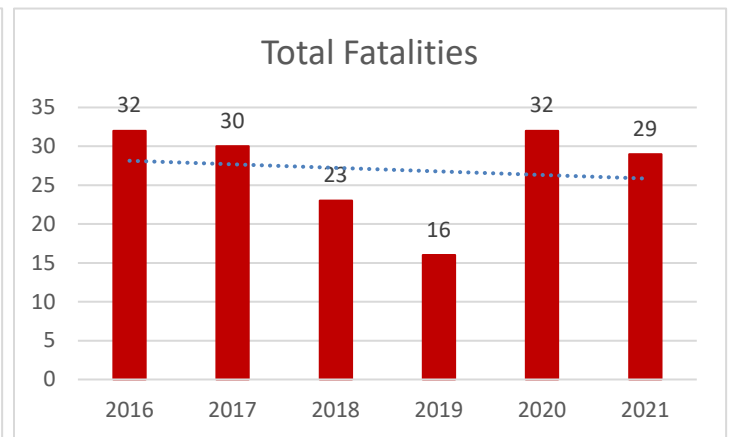
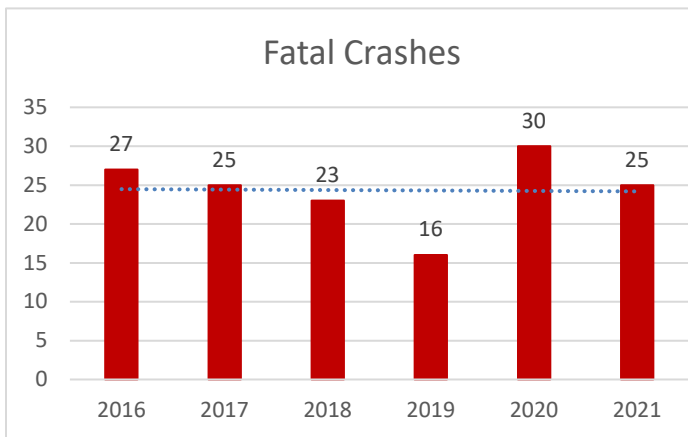
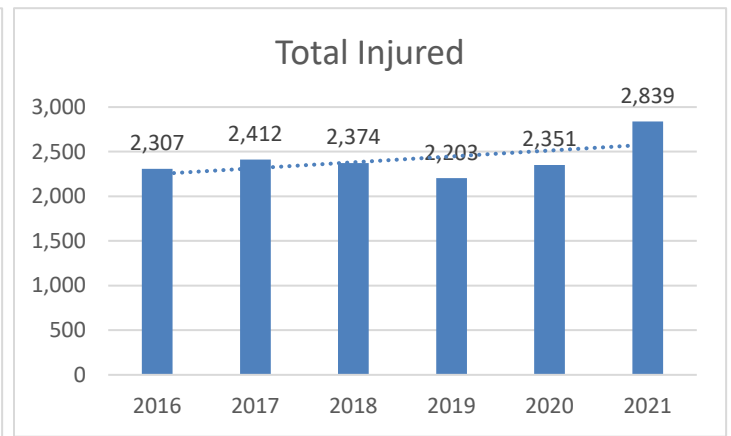
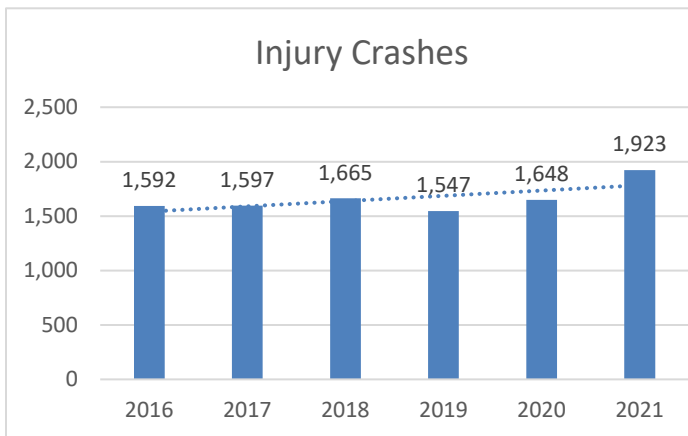


Intersection of Green Street and Ridgewood Avenue



Six-Year Trends

<i>Hall County</i>	2016	2017	2018	2019	2020	2021
Total Crashes	7,273	7,192	9,131	8,500	8,026	9,629
Injury Crashes	1,592	1,597	1,665	1,547	1,648	1,923
Total Injured	2,307	2,412	2,374	2,203	2,351	2,839
Fatal Crashes	27	25	23	16	30	25
Total Fatalities	32	30	23	16	32	29
Commercial Vehicle Crashes	229	265	322	281	270	322
Property Damage Crashes	5,663	5,570	7,443	6,937	6,348	7,681
Private Property Crashes	166	379	1445	1780	1551	1910
Work Zone Crashes	105	79	16	0	0	0



Six-year trends reveal relatively stable amounts of injury crashes and injuries year-over-year, with a noticeable increase in 2021, causing the trend line to trend upwards. The amount of fatalities and fatal crashes have both remained stable, showing a slight downward trend.

Citations

- Branch, Geographic Products. "TIGER/Line® Shapefiles and TIGER/Line® Files." *TIGER/Line® - Geography - U.S. Census Bureau*. N.p., 01 Sept. 2012. Web. 15 March 2019. <<https://www.census.gov/geo/maps-data/data/tiger-line.html>>.
- Hall County Title Page Image: "Overview of Hall County, GA." US News. Web. 6/8/2020. <<https://www.usnews.com/news/healthiest-communities/georgia/hall-county>>
- GEARS. Georgia Department of Transportation, 2022. Web. 7 February 2022. <<https://www.gearsportal.com/Pages/Public/Home.aspx>>.



GAINESVILLE-HALL
Metropolitan Planning Organization