

Gainesville – Hall Transportation Study
Transportation Improvement Program
2005-2007

Adopted December 2004
Amended May & August 2005

Prepared by the
Gainesville-Hall Metropolitan Planning Organization

In cooperation with the
Georgia Department of Transportation
Federal Highway Administration
Federal Transit Administration



GHMPO

Gainesville - Hall
Metropolitan Planning Organization

Flowery Branch - Gainesville - Hall County - Oakwood



*Gainesville – Hall Transportation Study
Transportation Improvement Program 2005-2007*

RESOLUTION

**GAINESVILLE-HALL METROPOLITAN PLANNING ORGANIZATION
POLICY COMMITTEE ADOPTION OF THE
GAINESVILLE HALL TRANSPORTATION STUDY
TRANSPORTATION IMPROVEMENT PROGRAM, FY 2005-2007**

WHEREAS, federal regulations for urban transportation planning require that the Metropolitan Planning Organization, in cooperation with the participants in the planning process, develop and update annually the Transportation Improvement Program (TIP); and

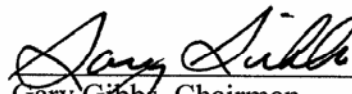
WHEREAS, the Hall County Planning Department has been designated as the host to the Gainesville-Hall Metropolitan Planning Organization (GHMPO); and

WHEREAS, this TIP has been drawn from and is consistent with the Gainesville Hall Transportation Study Long Range Transportation Plan; and

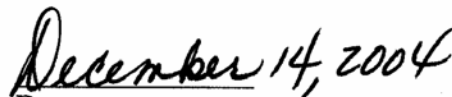
WHEREAS, the TIP must be a product of a planning process certified in conformance with all applicable requirements of law and regulation; and

WHEREAS, the GHMPO and the Georgia Department of Transportation have reviewed the organization and activities of the planning process and found them in conformance with the requirements of law and regulation; and

NOW, THEREFORE, BE IT RESOLVED that the Gainesville-Hall Metropolitan Planning Organization adopts the *FY 2005-2007 Transportation Improvement Program* as attached to this resolution.



Gary Gibbs, Chairman
Gainesville-Hall MPO
Policy Committee



Date



GHMPO Committees

Policy Committee

Voting

Gary Gibbs, Chairman, Hall County Board of Commissioners, Policy Committee Chair
George Wangemann, Mayor, City of Gainesville, Policy Committee Vice-Chair
Bryan Puckette, Mayor, City of Flowery Branch
Lamar Scroggs, Mayor, City of Oakwood
Cindy Van Dyke, GDOT, representing GDOT Commissioner Harold Linnenkohl

Non-voting

Tony Dittmeier, Federal Transit Administration
Andrew Edwards, Federal Highway Administration
Steve Kish, GDOT Planning and Intermodal Development
Todd Long, GDOT District 1, District Engineer
Phillipa Lewis Moss, Hall Area Transit
Kip Padgett, City of Gainesville, Technical Coordinating Committee Chair
Hugh Tyner, Citizens Advisory Committee Chair
Bill Meyer, GHMPO Director

Citizens Advisory Committee

Hugh Tyner, Oakwood, Chair
Ken Cochran, Hall County, Vice Chair
Augie DeAugustinis, Hall County
Cooper Embry, Gainesville
Doris Evans, Hall County
Harold Goss, Hall County
Amos Godelock, Gainesville
Mack Jones, Flowery Branch
Phil Kinsey, Hall County
Berlinda Lipscomb, Gainesville
Charles Mensinger, Oakwood
Maurice Robbins, Hall County
Frank Simpson, Gainesville
Lee Steigle, Hall County
Jim Syfan, Hall County
J.R. Wright, Gainesville



Gainesville – Hall Transportation Study Transportation Improvement Program 2005-2007

Technical Coordinating Committee

Voting

Kip Padgett, Planning Director, City of Gainesville, Chair
Stan Brown, City Manager, City of Oakwood, Vice Chair
Perry Eisenach, Public Works Director, City of Gainesville
Chris Rainwater, City Manager, City of Flowery Branch
Verdell Hawkins, Transportation Planner, GDOT
Phillipa Lewis Moss, Hall Area Transit
John McHenry, Transportation Planner, GHMPO
Russell McMurry, District Pre-Construction Engineer, GDOT
Bill Meyer, Director, GHMPO
James Miller, County Engineer, Hall County
Jerry Presley, Transportation Planner, Georgia Mountains RDC
Scott Puckett, Traffic Engineer, Hall County

Non-Voting

Steven Ballowe, Superintendent, Gainesville City Schools
Freida Black, Intermodal Planner, GDOT
Joe Burnett, Main Street Gainesville
Ken Cochran, Vice Chair, Citizens Advisory Committee
Steve Cronic, Sheriff, Hall County
Tony Dittmeier, Transportation Program Specialist, Federal Transit Authority
Kit Dunlap, President, Greater Hall Chamber of Commerce
Dennis Fordham, Superintendent, Hall County Schools
Frank Hooper, Police Chief, City of Gainesville
Randall Moon, Police Chief, City of Oakwood
Christy Moore, Northeast Georgia Medical Center
Andrew Edwards, Metropolitan Planning Specialist, Federal Highway Administration
Gerald Lanich, Police Chief, City of Flowery Branch

These committee members contributed to the development of this plan and/or were seated at the time of its adoption.



Gainesville – Hall Transportation Study Transportation Improvement Program 2005-2007

Introduction

In 2002 it was announced that the Gainesville and vicinity, with a population of 88,680, qualified as its own urbanized area based on the 2000 Census. This designation triggered federal requirements, including the establishment of a Metropolitan Planning Organization (MPO) and compliance with the federally regulated metropolitan planning process. An MPO was established to ensure that existing and future expenditures for transportation projects and programs are based on a continuing, cooperative and comprehensive (3-C) planning process. Figure 1 illustrates the boundary of the Gainesville Urbanized Area and its relation to the Atlanta Urban Area boundary.

In early 2003, the Hall County Planning Department was designated as the host of the Metropolitan Planning Organization (MPO) for the area. The GHMPO is responsible for conducting and maintaining the Gainesville-Hall Transportation Study (GHTS), which covers the entire County. The GHMPO has established three committees: the Policy Committee made up of elected officials and the GDOT Commissioner's representative; the Technical Advisory Committee, made up of local government and Federal and State staff; and the Citizens Advisory Committee, made up of citizens appointed by the four member local governments. Membership lists of these committees are included as an appendix to this document.

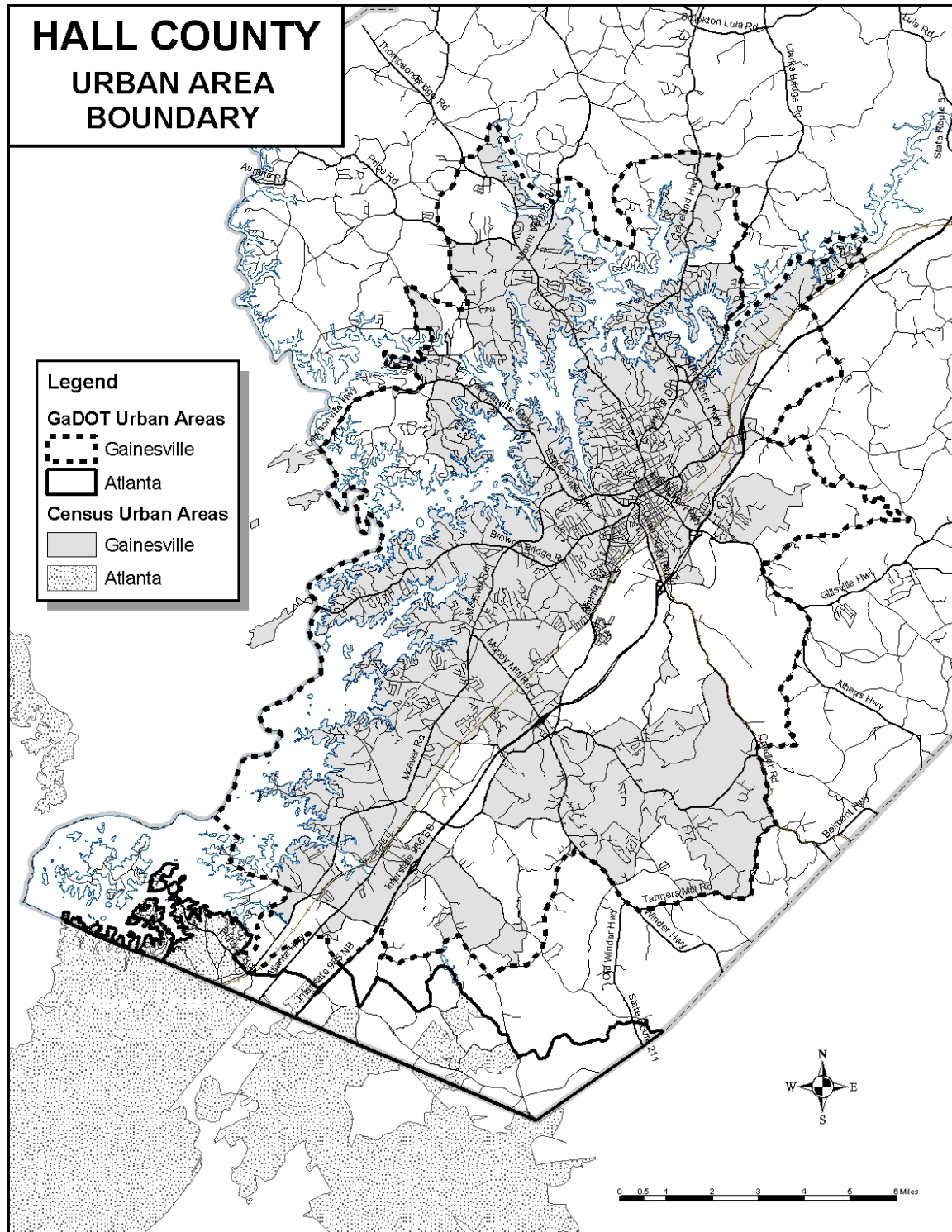
The new GHMPO planning process is a complex one for a newly-designated, smaller MPO. The County-wide study area includes the Gainesville urbanized area as well as a small portion of the metropolitan Atlanta urbanized area along its southern edge (approximately 2.7 percent of the County land area). Hall County has also recently been designated as part of a 20 County, 8 hour ozone air quality non-attainment area, requiring conformance with the State Implementation Plan (SIP) for air quality to secure federal transportation funding. Therefore, the area's transportation challenges must be met not only in the context of local constraints, such as funding and the growth of congestion, but also within the constraints of regional air quality planning.

The Planning Process

There are three documents that form the foundation for the ongoing work of the GHMPO. The Unified Planning Work Program (UPWP) is the annual program outlining the planning tasks to be completed in the updating and maintenance of the GHTS. The Long Range Transportation Plan (LRTP) is the heart of the process, and this document is required to be updated at least every three years. The Transportation Improvement Program (TIP) is the short-range program of transportation projects identified in the LRTP that are scheduled for implementation over the next three years, known as Tier I projects. The TIP also includes what are known as Tier II projects, which are those tentatively scheduled for years four through six.

The GHMPO's first Long Range Transportation Plan is being adopted simultaneously with this first Transportation Improvement Plan. The public involvement processes have also been conducted simultaneously as the GHMPO has worked to get its initial policy documents adopted in less than one year from the date that the organization's committees were seated.

**Figure 1 –
Gainesville and Atlanta Urban Area Boundaries within Hall County**





Gainesville – Hall Transportation Study Transportation Improvement Program 2005-2007

Transportation Improvement Program

The Transportation Improvement Program (TIP) shows the federally required 3 year capital improvement program, akin to the State Transportation Improvement Program but exclusively for projects within the GHMPO. The first GHMPO Transportation Improvement Program will cover a three-year period from Fiscal Year 2005 (beginning July 1, 2004) to Fiscal Year 2007 (ending June 30, 2007). The TIP will also include information on a second tier of projects from FY 2008-FY 2010. While the GHMPO TIP represent three-year period, it will be modified on an annual basis due to availability of funds, construction progress and mandated air quality conformity requirements.

Following are two spreadsheets showing the TIP projects in 2005-2007, followed by the second tier projects in 2008-2010. This is followed by project worksheets that supply more detail on these projects that are funded from 2005 – 2010. Prefacing these worksheets, there is a project definitions page to explain various items that are not self-explanatory.



Gainesville – Hall Transportation Study Transportation Improvement Program 2005-2007

FY 2005 –2007 TRANSPORTATION IMPROVEMENT PROJECTS

Map ID #	GDOT P#	Segment/Location	\$ Thousands									
			LUMP	FY 2005			FY 2006			FY 2007		
				PE	RW	CST	PE	RW	CST	PE	RW	CST
1	110400-	I-985 Split Diamond Interchange @ SR13 & SR53 & CD System						\$44,401				
8	122150-	US 129/Athens Highway from SR 332 at Talmo/ Jackson County to SR 323 in Hall County			\$ 5,784							
38	122240-	US 129 - SR 284/Clarks Bridge Road to White County Line								\$ 3,427		
10	6309	SR 13/ Atlanta Hwy. at Hilton Drive	\$ 350									
11	6448	Upgrade Traffic Signals at Jesse Jewel Parkway	\$ 750									
14	6614	Flowery Branch Historic Streetscape	\$ 402									
13	110465-	I-985/Exit22 Ramp Improvements at US 129/E.E. Butler								\$ 200	\$ 1,800	
28	132995	SR 52 at Candler Creek - Bridge					\$ 15					
29	142290	SR 52 at Chattahoochee River - Bridge					\$ 1,000					
3	142292	SR 323 at North Oconee River - Bridge									\$ 1,814	
52	142291	SR 284 at Chatahoochee River - Bridge					\$ 479					
Transit Funding												
Not Mapped		Section 5307 Operating Assistance for Gainesville		\$ 495			\$ 686			\$ 649		
Not Mapped		Section 5307 Capital for Gainesville		\$ 400			\$ 123			\$ 88		
Not Mapped		Section 5310 Elderly & Disabled Transit Funds					\$ 137			\$ 137		
Not Mapped		Section 5311 Rural Transit Operating					\$ 557			\$ 411		
Not Mapped		Section 5311 Rural Transit Capital					\$ 111			\$ 75		
TOTAL			\$ 1,502	\$ 895	\$ 5,784	\$ -	\$ 1,614	\$ 1,494	\$ 44,401	\$ 1,560	\$ 3,427	\$ 3,614
FY 05-07												
PE			\$ 4,069									
ROW			\$ 10,705									
CST			\$ 48,015									
TOTAL			\$ 62,789									
LUMP			\$ 1,502									



Gainesville – Hall Transportation Study Transportation Improvement Program 2005-2007

FY 2008 – 2010 TIER II PROJECTS

Map ID #	GDOT PI#	Segment/Location	\$ Thousands								
			FY 2008			FY 2009			FY 2010		
			PE	RW	CST	PE	RW	CST	PE	RW	CST
2	1097	Thurmon Tanner Parkway Phase III			\$ 5,300						
6	141810	Memorail Park Extension/Skelton Road & Connector - SR 369 to Shallowford Road									\$ 16,320
9	122030	McEver Road Intersections				\$ 750	\$ 2,250	\$ 4,500			
4	121780-	SR53/Dawsonville Highway - Duckett Mill Rd to Lake Ranch Ct & Old Sardis Rd			\$ 20,000						
5	122020-	SR 53/Winder Highway From South Of SR 211 to Cedar Ridge Drive			\$ 17,000						
7	162430-	SR 347/Friendship Road From I-985 SR 211									\$ 33,527
8	122150-	US 129/Athens Highway from SR 332/Gillsville Highway Jackson County to SR 323 in Hall County			\$ 16,020						
TOTAL			\$ -	\$ -	\$ 58,320	\$ 750	\$ 2,250	\$ 4,500	\$ -	\$ -	\$ 49,847

FY 08-10	
PE	\$ 750
ROW	\$ 2,250
CST	\$ 112,667
TOTAL	\$ 115,667