

2017

Hall County Crash Profile



Prepared by Gainesville-Hall Metropolitan Planning Organization (GHMPO)

Based upon data provided by the Georgia Department of Transportation (GDOT) via the Georgia Electronic Accident Reporting System (GEARS)

6/8/2017

Table of Contents

Background	3
2008 Crash Report Summary	4
2015 Crash Report Summary	5
2016 Crash Statistics	5
2016 Crash Maps	6
2016 Crash Hot Spots	10
2016 Crash Charts	11
Five Year Trends (2012-2016)	16
Sources	17



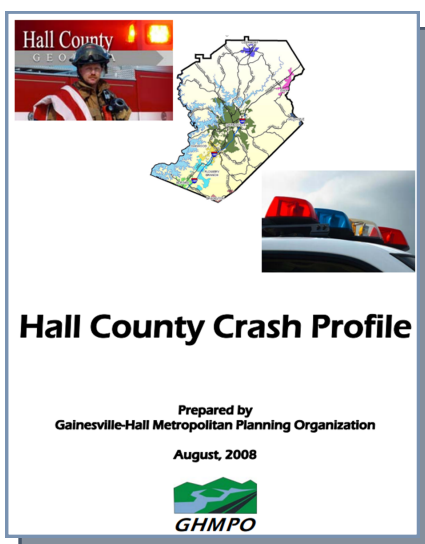
Background



The Gainesville-Hall Metropolitan Planning Organization (GHMPO) is the federally designated transportation planning body in Northeast Georgia consisting of the Gainesville urbanized area, Hall County, and the western portion of Jackson County. GHMPO was formed on February 25, 2003, and is housed within the Hall County Planning Department.



The Georgia Department of Transportation (GDOT), jointly with the Governor's Office of Highway Safety, provides a statewide accident reporting database titled the Georgia Electronic Accident Reporting System (GEARS). Using GEARS, agencies across the state are able to electronically submit accident data that contains information such as number of injuries, number of fatalities, accident type, accident location, time of day, gender and age of the driver, and GPS coordinates. Reporting crashes electronically not only saves local agencies thousands of dollars a year but also provides transportation professionals valuable data that can be used to help identify high crash locations and areas that may require additional funding for safety and operational improvements in the future.



GHMPO has produced two crash profiles in the past. The first report was created in 2008 and analyzed crash data between the years 2000 and 2007 in Hall County. A second report was created in 2016 and analyzed data from 2011 through 2015 in both Hall and Jackson Counties. This report was created in 2017 and analyzes data from 2012-2016.



2008 Crash Analysis Report

The following is data from the **2008 Crash Profile** for Hall County.

Table 1. Regional Crash Statistics

Statistic	Forsyth	Gwinnett	Jackson	Hall	Region Total	Georgia
Total Crashes	32,099	205,100	12,833	49,528	299,560	2,664,709
Fatal Crashes	126	560	122	221	1,029	11,877
Injury Crashes	7,712	46,741	3,550	12,779	70,782	698,455
PDO* Crashes	24,261	157,799	9,161	36,528	227,749	1,954,377
Crashes Per 10,000 VMT*	13.04	16.53	6.72	15.18	14.95	11.17
Total Fatalities	136	602	145	241	1,124	13,146
Total Injured Persons	11,361	67,837	5,740	19,681	104,619	1,071,460
Intersection Crashes	14,818	102,641	5,256	26,631	149,346	1,239,715
Pedestrian Crashes	78	901	35	279	1,293	19,390
Bike Crashes	16	286	19	76	397	7,341
Commercial Vehicle Crashes	1,589	8,551	952	1,853	12,945	122,456

Sources: 2000-2007 Georgia Crash Data, CARE; Report 445, GDOT.

*Vehicle miles traveled (VMT) data is only available through the year 2006, therefore all VMT statistics cover years 2000-2006.

*Property Damage Only (PDO)

Table 2a: Hall County Summary

Statistic	Annual Average (2000-2007)	Total (2000-2007)	Regional** Total (2000-2007)	% of Regional Total
Total Crashes	6,191	49,528	299,560	16.5%
Fatal Crashes	28	221	1,029	21.5%
Injury Crashes	1,597	12,779	70,782	18.1%
PDO Crashes	4,566	36,528	227,749	16.0%
Crashes Per 10,000 VMT (00-06)*	1.90	15.18	14.95	101.6%
Total Fatalities	30	241	1,124	21.4%
Total Injured Persons	2,460	19,681	104,619	18.8%
Intersection Crashes	3,329	26,631	149,346	17.8%
Pedestrian Crashes	35	279	1,293	21.6%
Bike Crashes	10	76	397	19.1%

Sources: 2000-2007 Georgia Crash Data, CARE; Report 445, GDOT.

Table 2b: Top 10 Crash Hotspot Description

Facility	Limits	Number of Total Crashes (2000-2007)	% of County Total Crashes	Fatal Crashes	Injury Crashes	POD Crashes
SR 53 - Washington Street	Pearl Nix Parkway to Shallowford Road	767	1.55%	0	162	605
SR 60 - Jesse Jewell Parkway	Bank Street to Bradford Street	695	1.40%	0	139	556
SR 11 - Jesse Jewell Parkway	Cleveland Highway to Summit Street	656	1.32%	0	168	488
SR 53 - Mundy Mill Road	Mundy Mill Drive to Old Flowery Branch Road	646	1.30%	1	138	507
SR 53 - McEver Road	McEver Corner to The Retreat Apartments	576	1.16%	0	116	460
SR 13 - Atlanta Highway	Winder Highway to Atkins Drive	478	0.97%	0	111	367
SR 11 - E. E. Butler Parkway	Chestnut Street to MLK Blvd	459	0.93%	0	95	364
SR 13 - Atlanta Highway	Hospital Drive to Browns Bridge Road	450	0.91%	1	113	336
I-985	Mile 13.6 to 14.1	434	0.88%	0	134	300
SR 11 - E. E. Butler Parkway	Mile 8 to Chestnut Street	431	0.87%	1	97	333

Source: 2000-2007 Georgia Crash Data, CARE.



2016 Crash Analysis Report

The following is data from the **2016 Crash Profile** for Hall County.

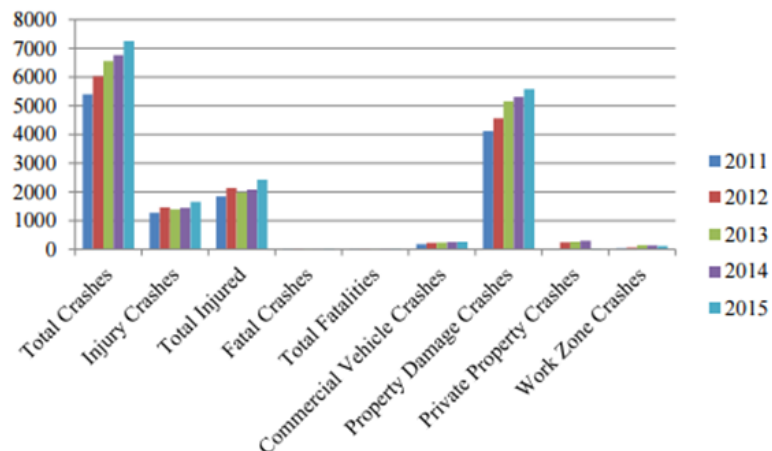
High Accident Locations

January 1, 2011 through December 31, 2015

	TOTAL COLLISIONS	TOTAL FATAL COLLISIONS	TOTAL INJURY COLLISIONS	TOTAL PROPERTY DAMAGE	NUMBER KILLED	NUMBER INJURED
MUNDY MILL RD HWY 53 &	340	0	2	338	0	2
SPOUT SPRINGS RD &	178	0	3	175	0	5
MUNDY MILL HWY 53 &	145	0	0	145	0	0
MUNDY MILL RD HWY 53 & MATHIS DR	121	0	18	103	0	23
MUNDY MILL RD HWY 53 & OLD OAKWOOD RD	115	1	32	82	1	52
MUNDY MILL RD HWY 53 & THURMON TANNER PKWY	108	0	27	81	0	35
WINDER HWY 53 &	98	0	1	97	0	1
PEARL NIX PKWY & SR 53	92	0	15	77	0	15
ATLANTA HIGHWAY 13 & MUNDY MILL RD HWY 53	91	0	7	84	0	8
MUNDY MILL RD HWY 53 & MUNDY MILL DR	80	0	17	63	0	24
SR 53 N & SR 53	79	0	21	58	0	26
SR 53 E & SR 53	72	0	14	58	0	16
ATLANTA HIGHWAY 13 & POPLAR SPRINGS RD	64	0	12	52	0	15
WASHINGTON ST & SR 53	61	0	5	56	0	5
I 985 N &	59	0	11	48	0	18

The following table and graph show certain crash statistics by year. The data shows that crashes have increased every year.

	2011	2012	2013	2014	2015
Total Crashes	5,401	6,027	6,553	6,757	7,248
Injury Crashes	1,270	1,460	1,391	1,443	1,652
Total Injured	1,847	2,138	1,969	2,083	2,427
Fatal Crashes	25	23	16	16	34
Total Fatalities	28	26	18	21	35
Commercial Vehicle Crashes	182	223	235	248	259
Property Damage Crashes	4,119	4,557	5,152	5,306	5,579
Private Property Crashes	9	244	264	299	25
Work Zone Crashes	47	60	146	133	119



2016 Crash Statistics

Crash Summary	
Total Crashes:	7,273
Injury Crashes:	1,592
Total Injured:	2,307
Fatal Crashes:	27
Total Fatalities:	32
Commercial Vehicle Crashes:	229
Property Damage Crashes:	5,663
Private Property Crashes:	166
Work Zone Crashes:	105

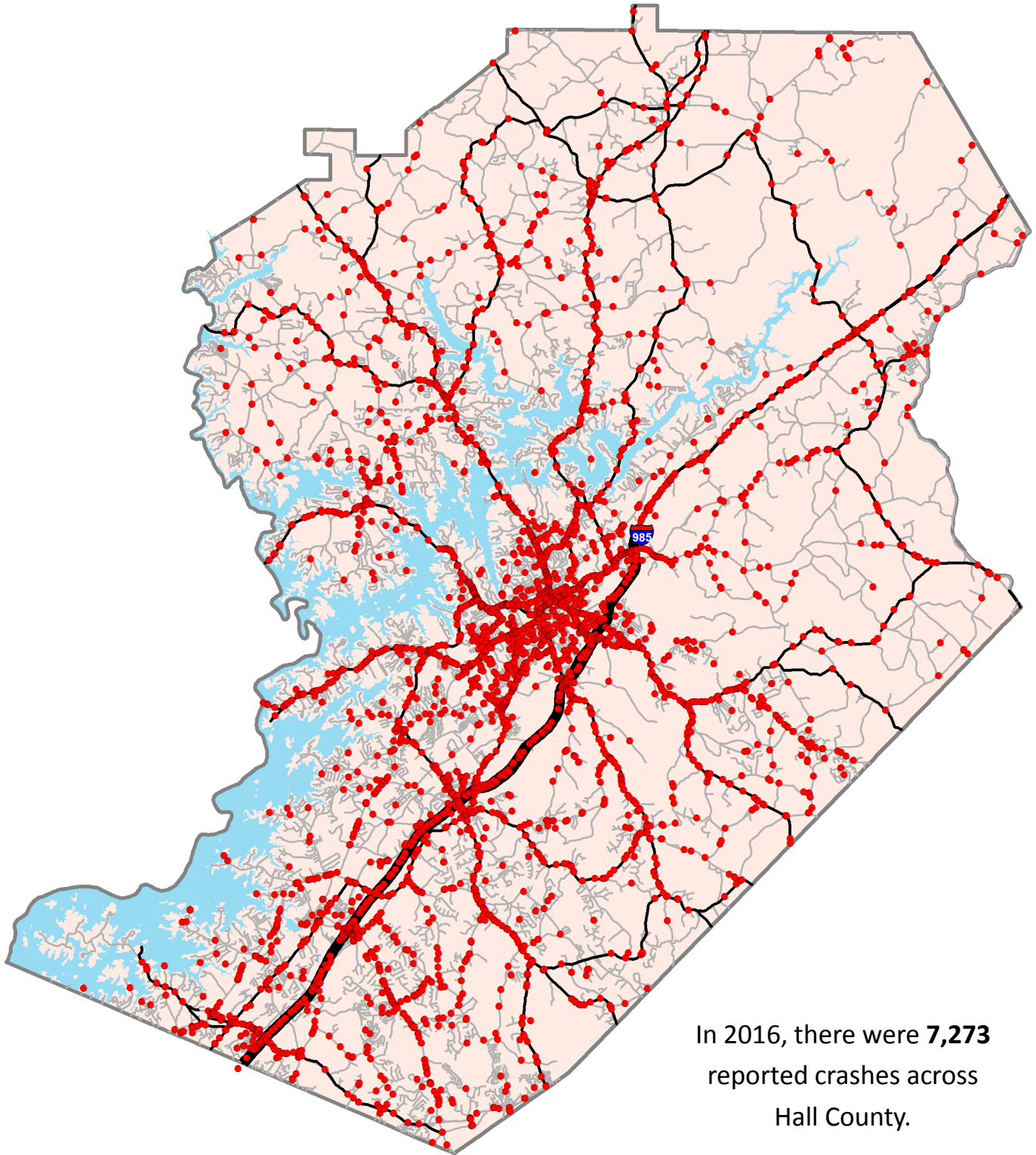
The table to the left highlights the reported crash numbers across a variety of categories throughout Hall County in 2016.

The table below highlights high accidents locations in Hall County in 2016. Dawsonville Hwy, McEver Road, Spout Springs, Jesse Jewell Pkwy, and EE Butler Pkwy round out the top five.

High Accident Locations						
From: 1/1/2016 - 12/31/2016						
	Total Collisions	Total Fatal Collisions	Total Injury Collisions	Total Property Damage	Number Killed	Number Injured
Dawsonville Hwy & McEver Road	114	0	24	90	0	35
Spout Springs Road	54	0	0	54	0	0
Jesse Jewell Pkwy & EE Butler Pkwy	52	0	9	43	0	10
EE Butler Pkwy & W Ridge Road	41	0	11	30	0	13
Dawsonville Hwy & Beechwood Blvd	40	0	9	31	0	16
McEver Road & Browns Bridge Road	76	0	21	58	0	32
EE Butler Pkwy & MLK JR Blvd	32	0	8	24	0	8
Jesse Jewell Pkwy & Downey Blvd	28	0	6	22	0	10
Dawsonville Hwy & Shallowford Road	27	0	6	21	0	11
EE Butler Pkwy & I-985	27	0	4	23	0	5
EE Butler Pkwy & Chestnut St	26	0	11	15	0	16
Green Street & Ridgewood Ave	22	0	6	16	0	7

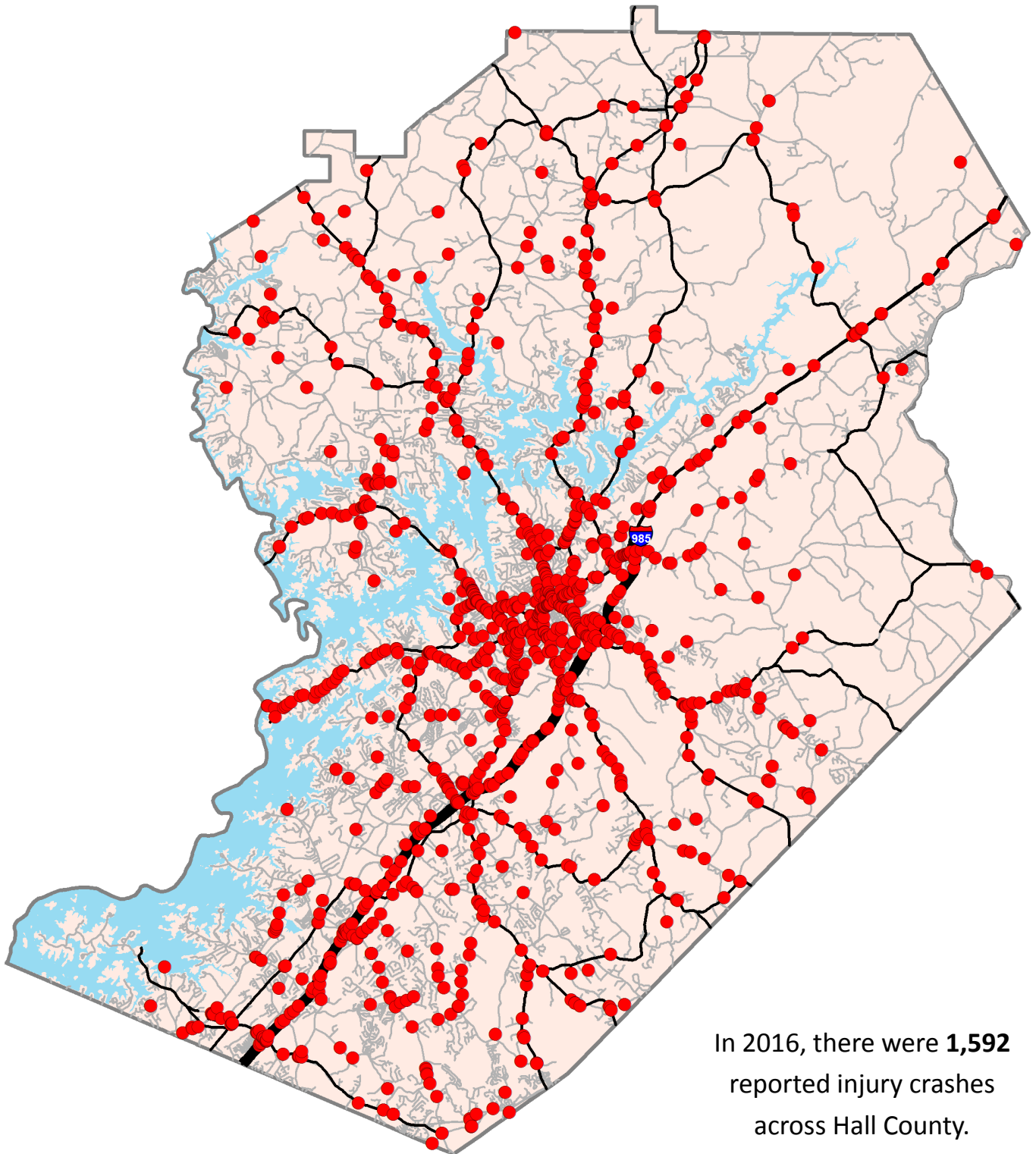


2016 Crash Locations



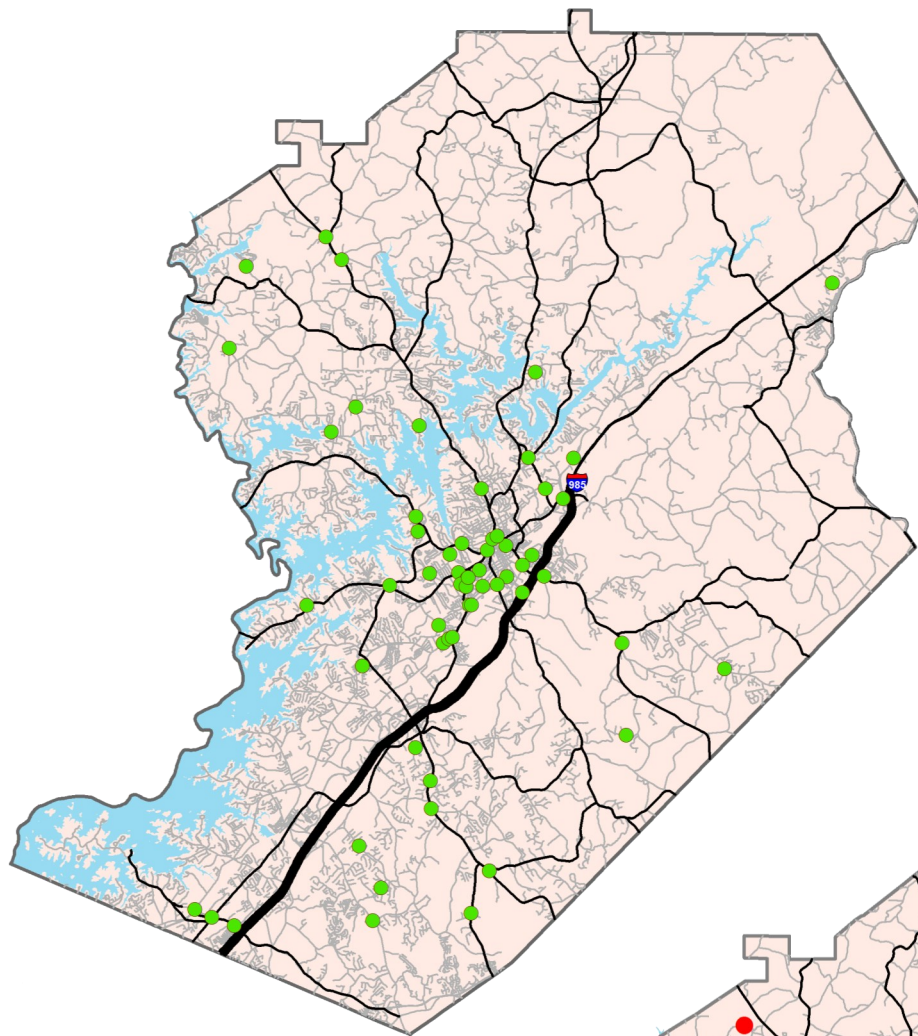
In 2016, there were **7,273** reported crashes across Hall County.

2016 Injury Crash Locations

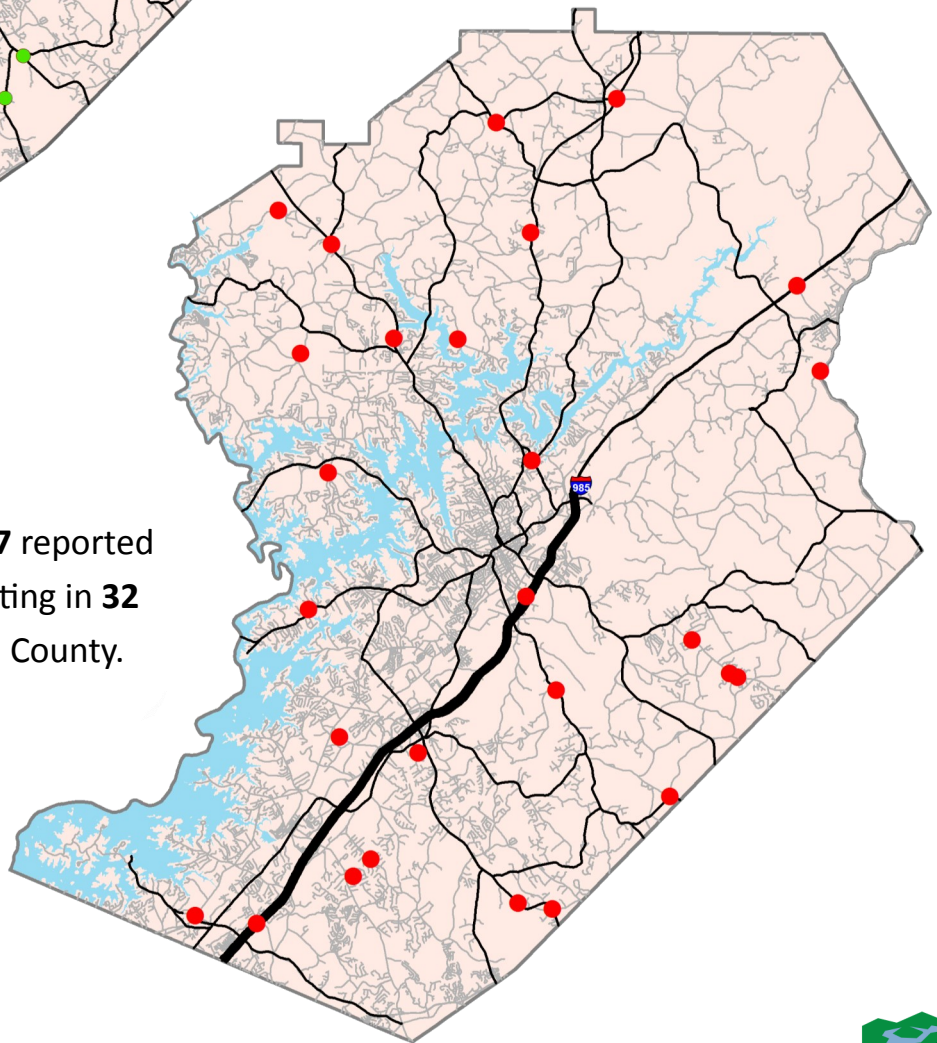


In 2016, there were **1,592** reported injury crashes across Hall County.





In 2016, there were **63** reported pedestrian-involved crashes resulting in **47 injuries** and **5 fatalities** across Hall County.

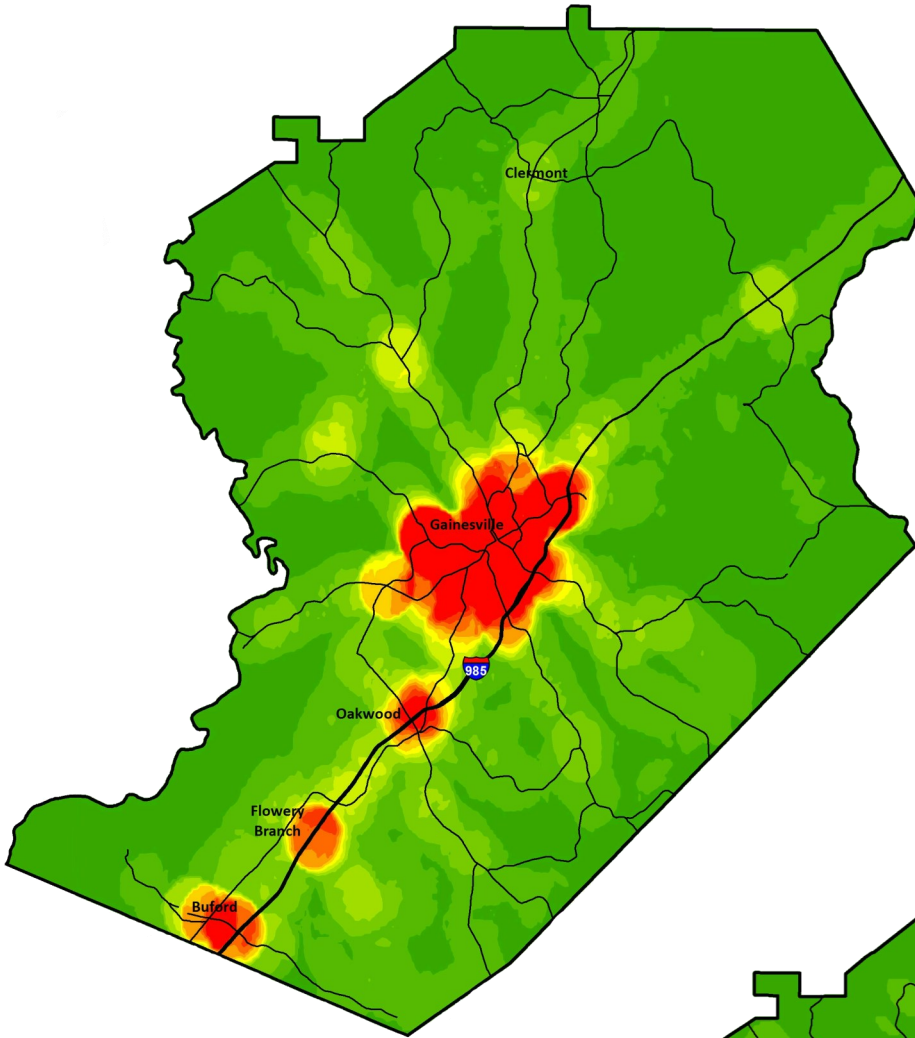


In 2016, there were **27** reported fatality crashes resulting in **32 fatalities** across Hall County.

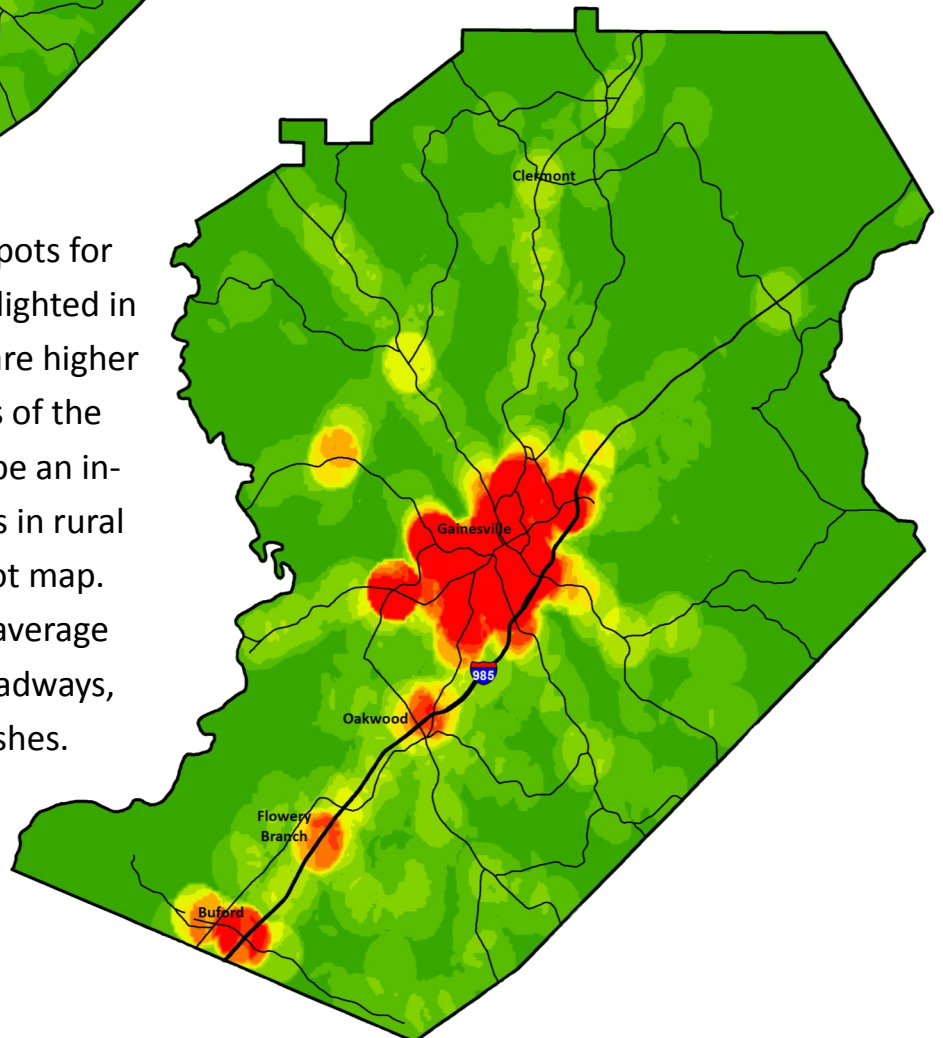
2016

Hot Spots

In the map to the left, hot spots for overall crashes in 2016 are highlighted in red. As expected, overall crash rates are higher within more urbanized areas of the county than in rural areas.

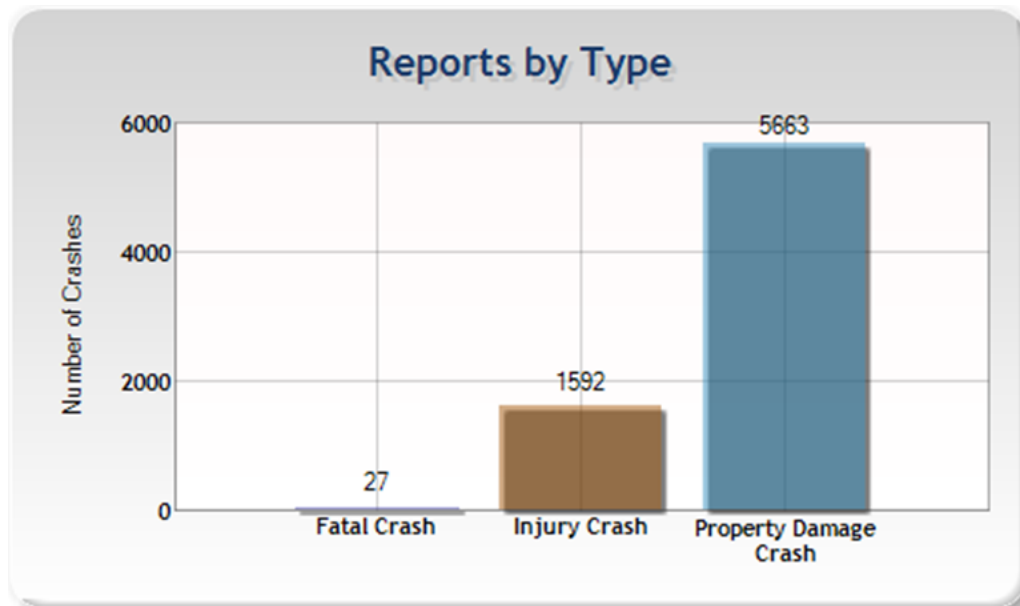
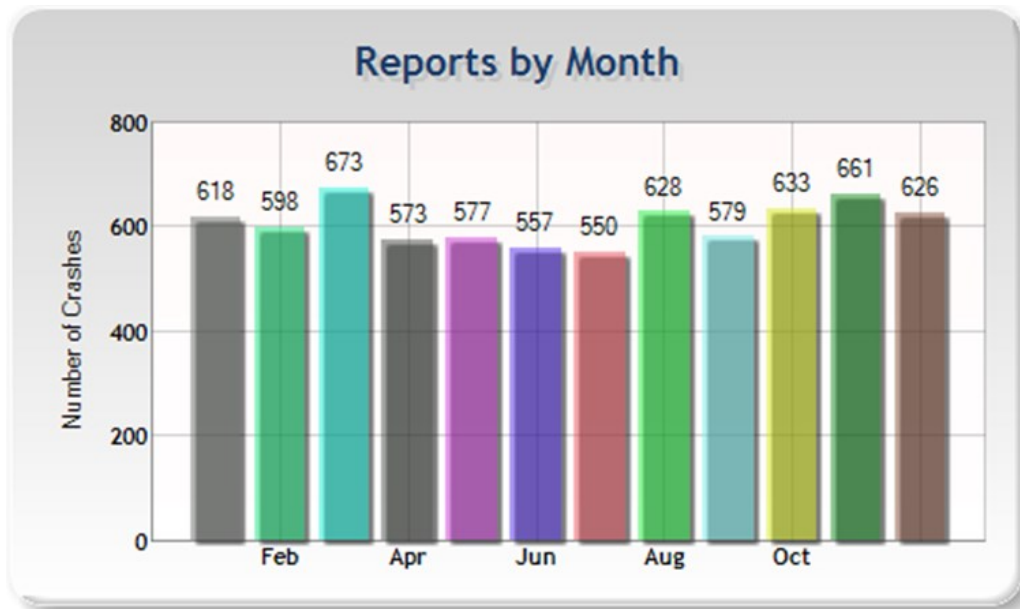


In the map to the right, hot spots for injury crashes in 2016 are highlighted in red. Overall injury crash rates are higher within more urbanized areas of the county, but there appears to be an increase in rate of injury crashes in rural areas over the above hot spot map. This may be due to a higher average speed of travel along rural roadways, leading to more injury crashes.



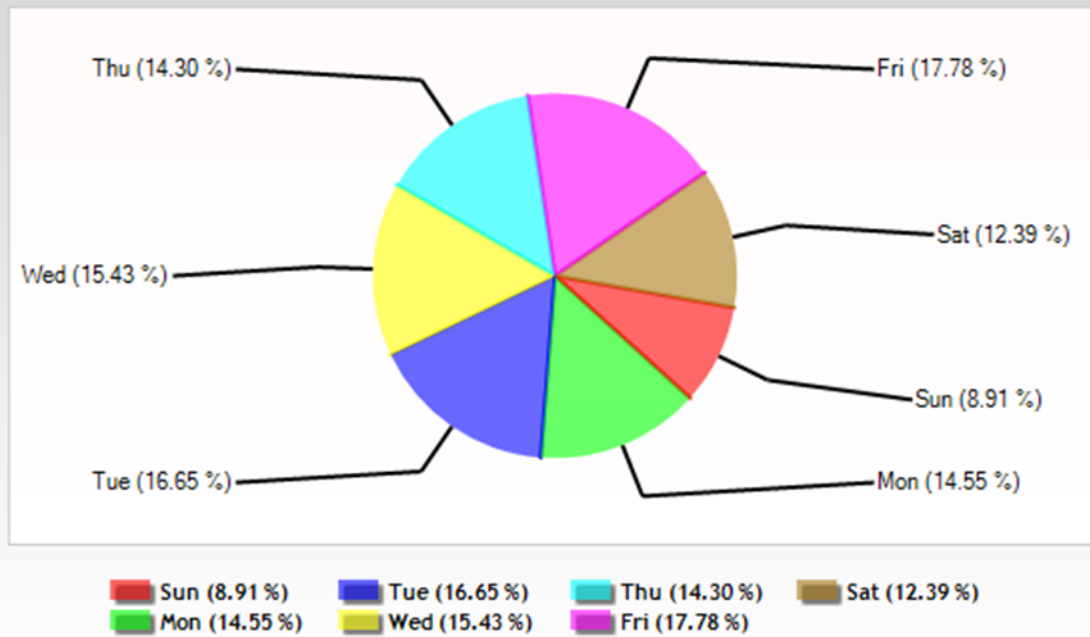
2016 Crash Charts

The following graphs were provided by the GEARS webpage regarding 2016 crash trends in Hall County.

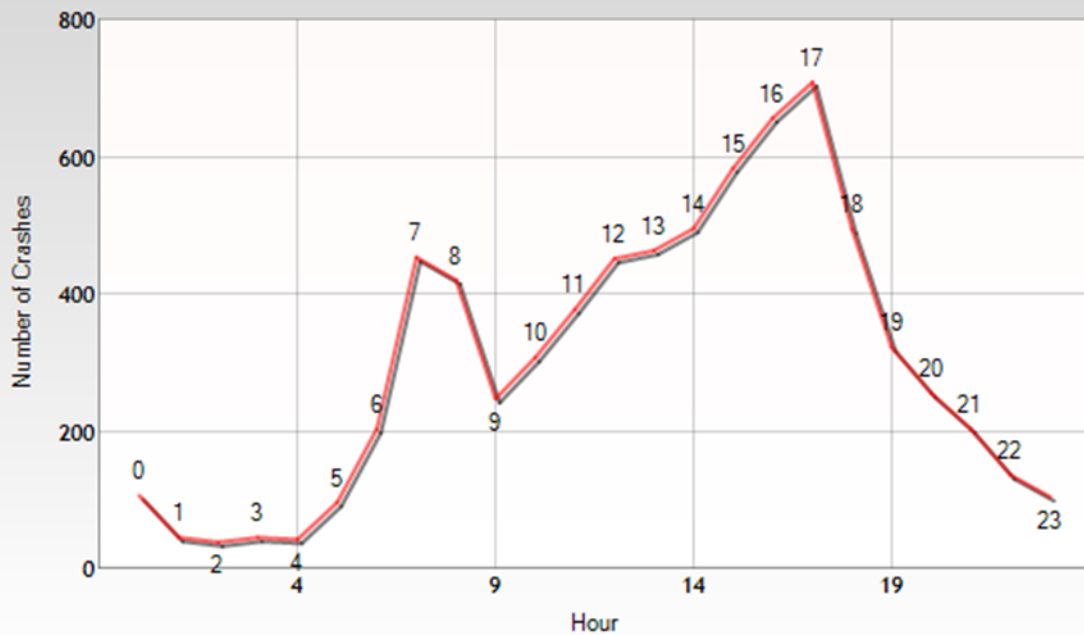


2016 Crash Charts

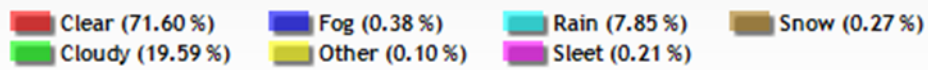
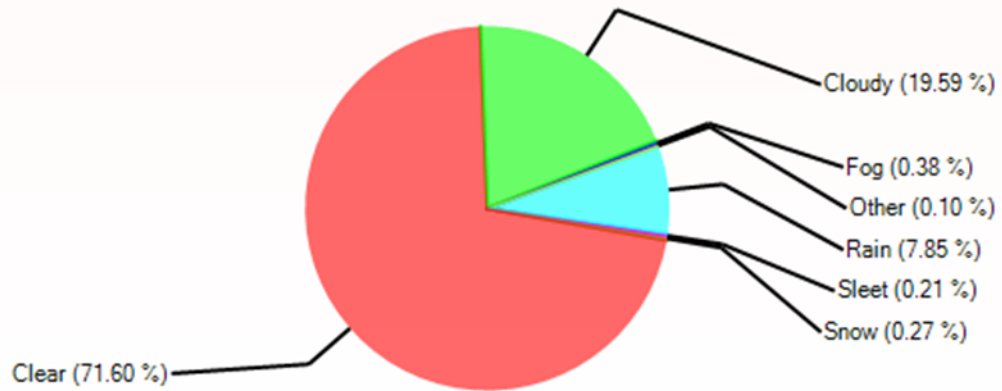
Days of Week



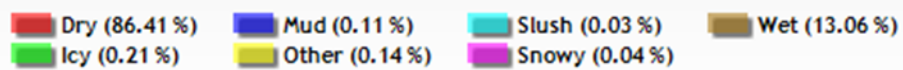
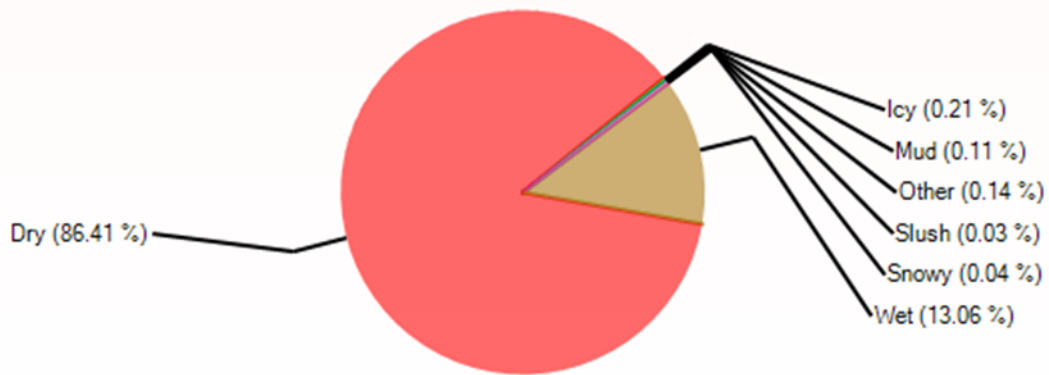
Time of Day



Weather Conditions

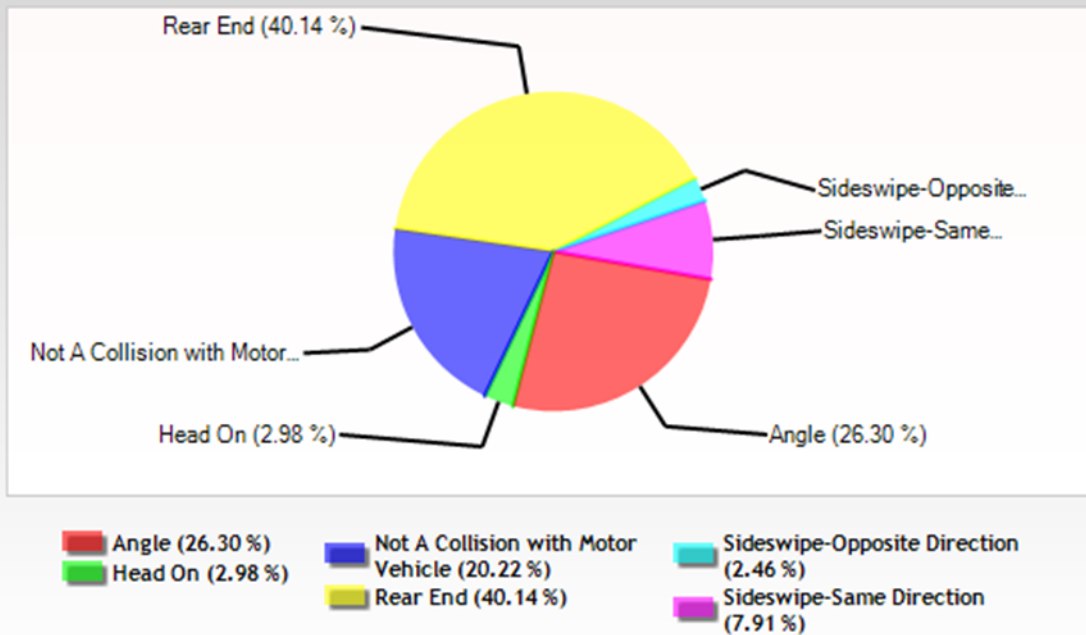


Road Surface Condition

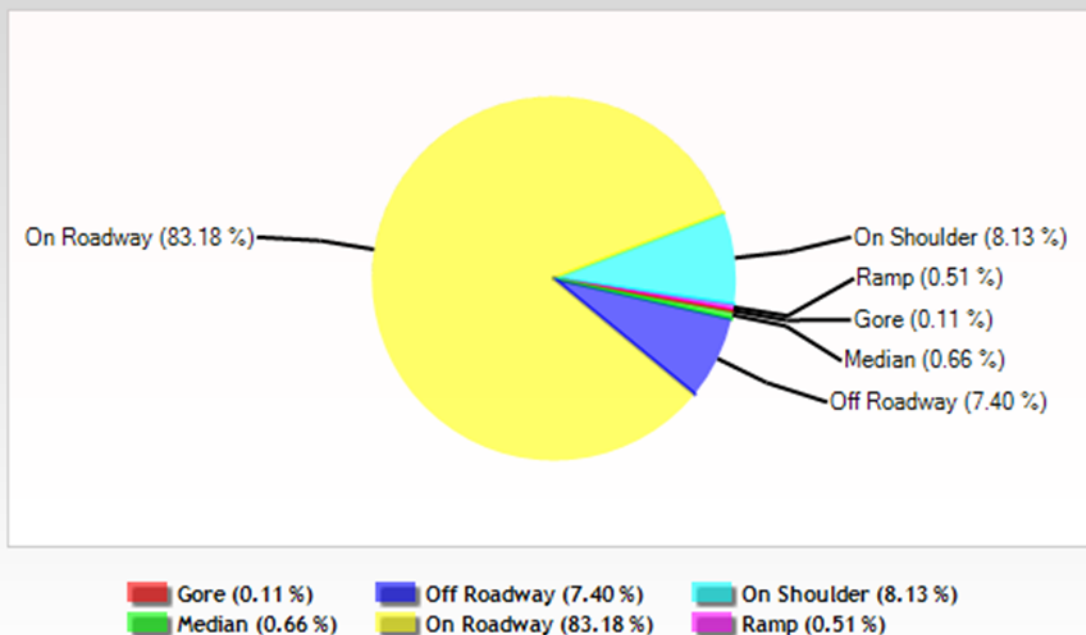


2016 Crash Charts

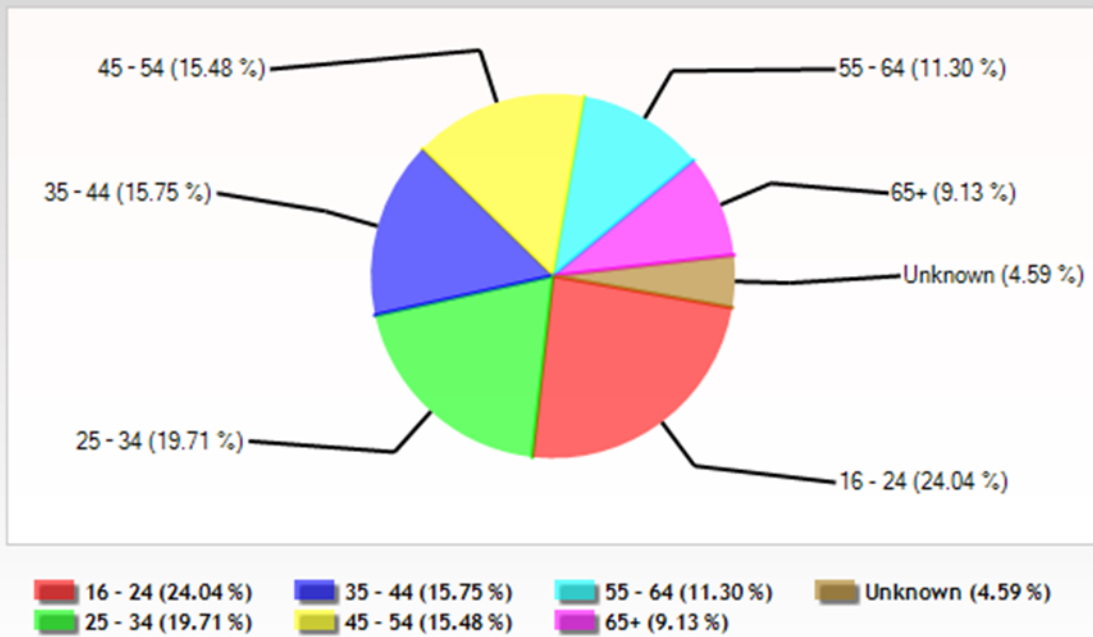
Manner of Collision



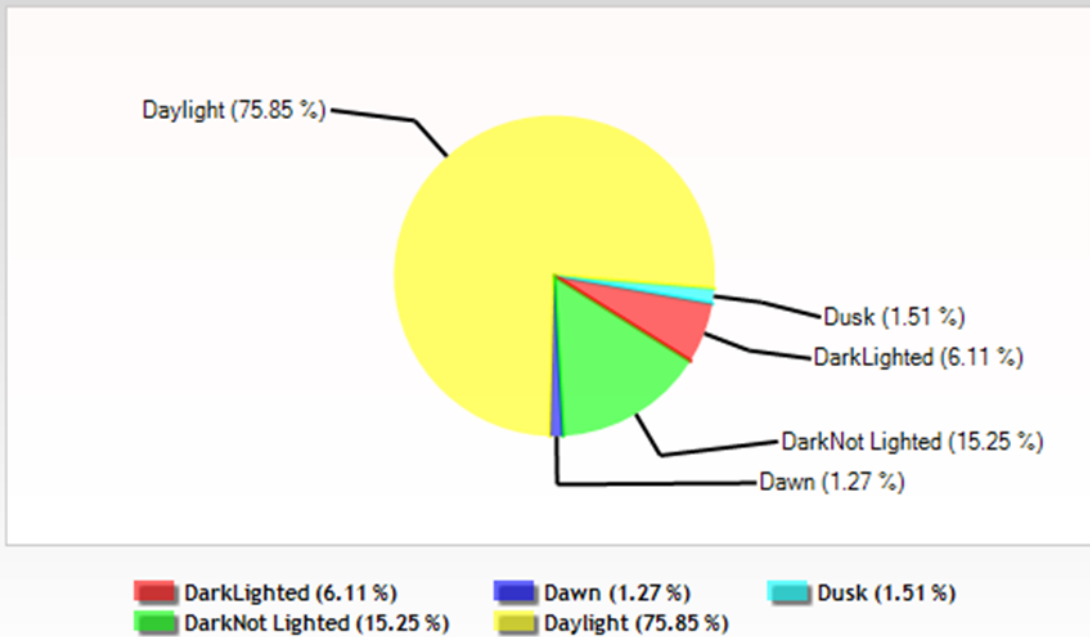
Location At Impact



Age of Driver



Light Condition

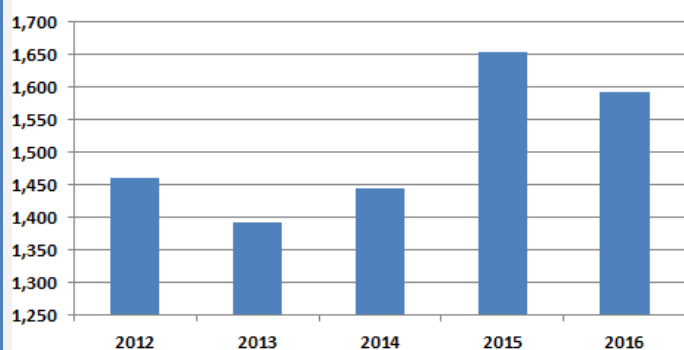


Five Year Trends (2012-2016)

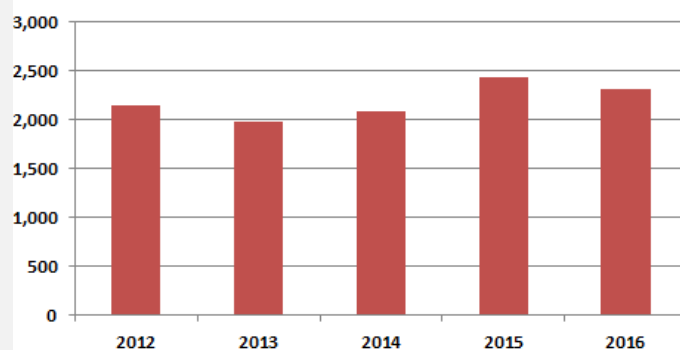
2016 saw a slight increase in the number of crashes in Hall County, with a slight dip in the number of injuries and fatalities over 2015. Number of crashes, injuries, and fatalities however remain higher than the figures from five years previously.

<i>Hall County</i>	2012	2013	2014	2015	2016
Total Crashes	6,027	6,553	6,757	7,248	7,273
Injury Crashes	1,460	1,391	1,443	1,652	1,592
Total Injured	2,138	1,969	2,083	2,427	2,307
Fatal Crashes	23	16	16	34	27
Total Fatalities	26	18	21	35	32
Commercial Vehicle Crashes	223	235	248	259	229
Property Damage Crashes	4,557	5,152	5,306	5,579	5,663
Private Property Crashes	244	264	299	25	166
Work Zone Crashes	60	146	133	119	105

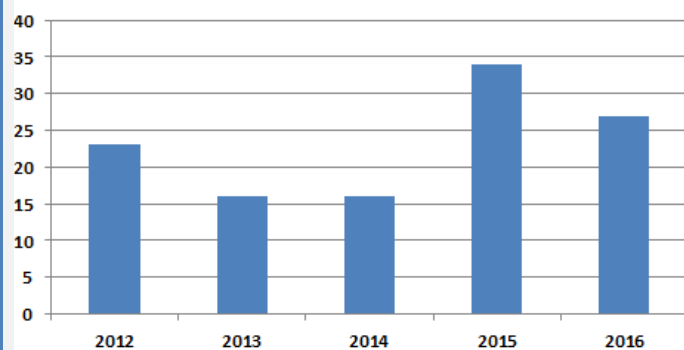
Injury Crashes



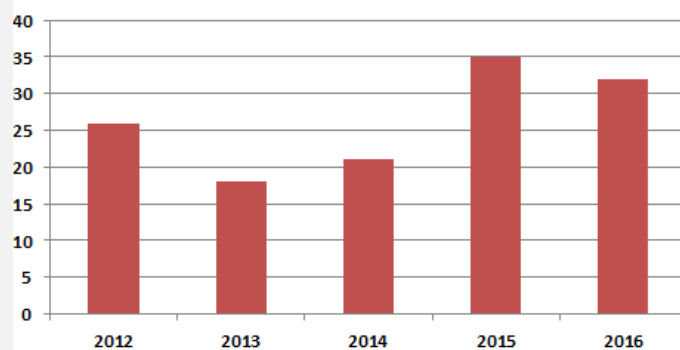
Total Injured



Fatality Crashes



Total Fatalities



Summary

In conclusion, the number of crashes reported in Hall County in 2016 saw a slight increase over the previous year. However, the number of fatalities and injuries registered a small decrease from 2015. The overall trend though is an increase in fatalities and injuries from year to year, which is consistent with the rest of Georgia. Rising population numbers and an increase in recorded distracted driving incidents are widely believed to be partially contributing to the rise of crashes across the country.

Sources

- Branch, Geographic Products. "TIGER/Line® Shapefiles and TIGER/Line® Files." *TIGER/Line® - Geography - U.S. Census Bureau*. N.p., 01 Sept. 2012. Web. 22 May 2017. <<https://www.census.gov/geo/maps-data/data/tiger-line.html>>.
- *Car Crash Image*. N.p., n.d. Web. 22 May 2017. <<http://www.mccannwallinjurylaw.com/files/2016/12/Personal-Injury-Multiple-Car-Crash.jpg>>.
- *Driver Image*. N.p., n.d. Web. 7 June 2017. <https://static.pexels.com/photos/13861/IMG_3496bfree.jpg>.
- *GEARS*. Georgia Department of Transportation, 2017. Web. 22 May 2017. <<https://www.gearsportal.com/Pages/Public/Home.aspx>>.

