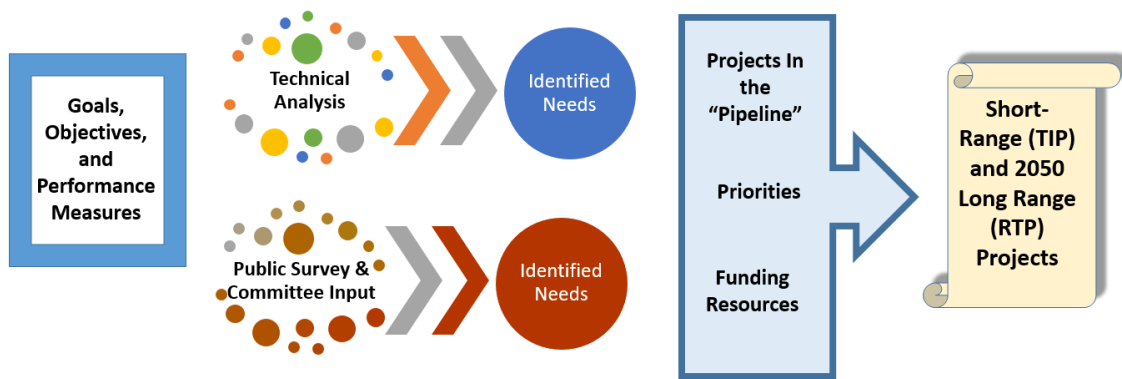


Regional Transportation Plan: 2020 Update

WHAT IS A Regional Transportation Plan?

The 2050 Regional Transportation Plan (RTP): 2020 Update highlights both short-term strategies and long term planning outlooks for the Gainesville-Hall Metropolitan Planning Organization (GHMPO) area through the year 2050. The RTP analyzes the transportation network as a whole by examining roadways, transit networks, and bicycle and pedestrian infrastructure within the MPO. Based on the technical analysis and input by members of the three GHMPO Committees, future projects, programs, and policies are identified. The RTP also identifies available funding sources in order to construct and implement the identified projects and policies.

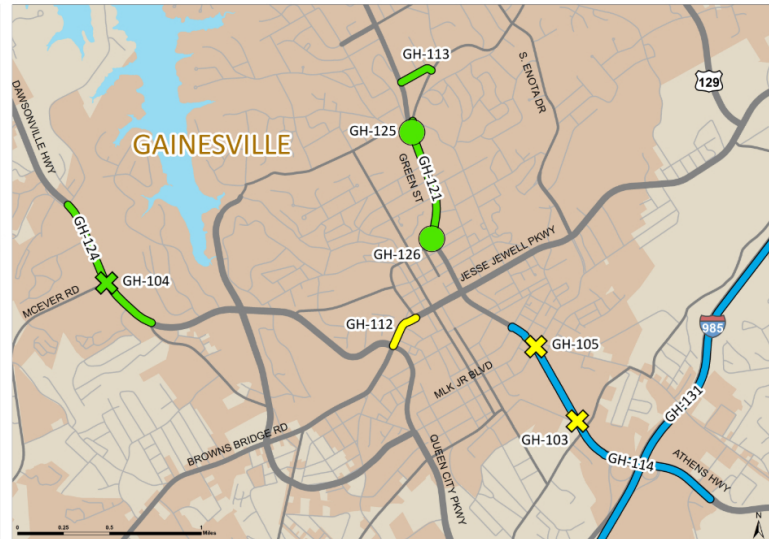
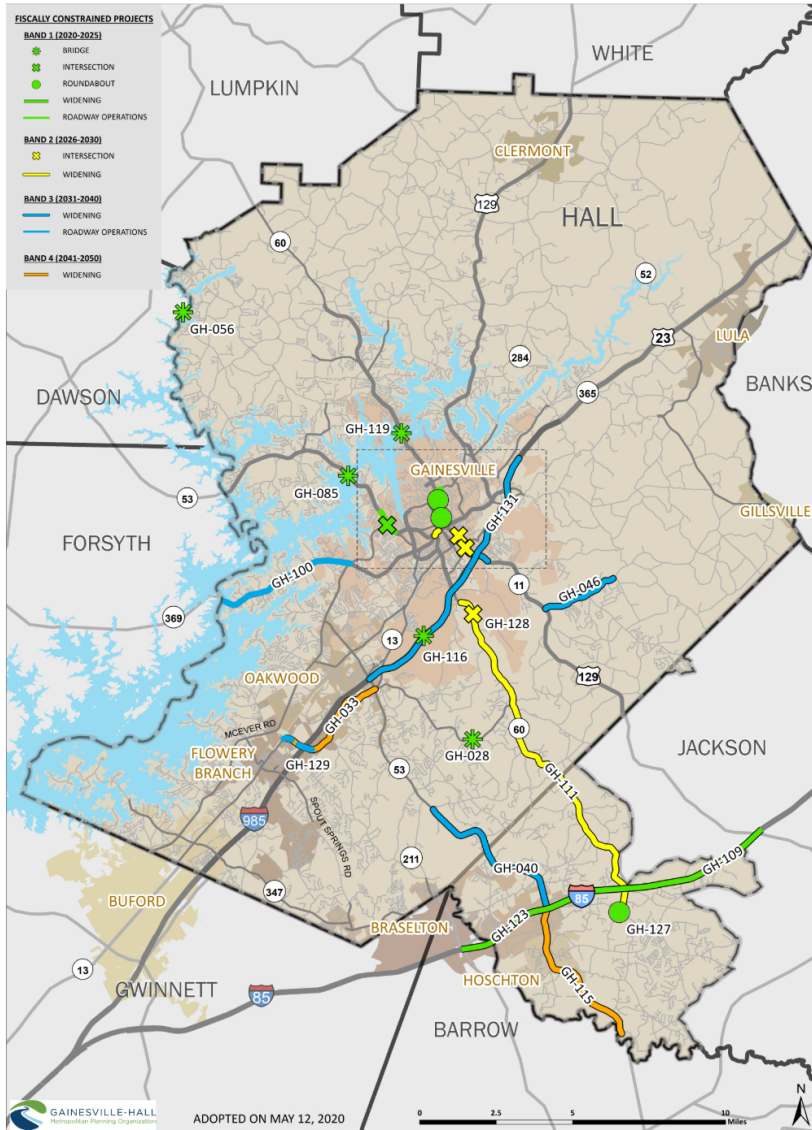


Goal and Planning Factors

Using the national and state goals and planning factors, a series of goals have been developed that directly relate to the GHMPO RTP. In addition to guidance provided at the state/federal levels, stakeholder and local agency feedback was gathered to further modify the recommended goals. These goals are designed to shape the future of the transportation network and to ensure that the needs of the local community are being addressed by the proposed projects. Through coordination with the Technical Advisory Committee and standing GHMPO committees, the goals for the 2020 RTP update were incorporated unchanged from the previous 2015 RTP, as follows:

- **Coordination and Outreach** – Develop a financially feasible plan that will increase the likelihood of successful implementation through agency, stakeholder, and public coordination
- **Multimodal Connectivity** – Provide a more integrated multimodal and intermodal transportation system that includes increased travel options by prioritizing transit, pedestrian, and bicycle travel throughout the region
- **Safety and Security** – Maintain and improve transportation system safety and security for motorists, transit riders, pedestrians, and bicyclists
- **System Preservation and Maintenance** – Take steps to continually monitor and maintain the transportation system
- **Environment** – Develop a transportation system that conserves energy, promotes the attainment of air quality standards, protects the natural environment, and minimizes adverse impacts
- **Mobility and Economic Vitality** – Provide a transportation system that provides for the movement of people and goods safely and efficiently and advances the region’s economic competitiveness
- **Land Use Integration** – Develop a transportation system that is efficient by integrating transportation planning with land use decisions and other comprehensive planning tools

2050 REGIONAL TRANSPORTATION PLAN | 2020 UPDATE



GHMPO #	GDOT PI #	Band	Project Name and Description	Project Type
GH-028	0013609	2	SR 332/Poplar Springs Road at Walnut Creek & Overflow	Bridges
GH-033	0001822	4-UF	SR 13 from Radford Road to South of SR 53	Widening
GH-040	0013310	3-4	SR 53/Winder Highway from I-85/Jackson County to SR 211/Tanners Mill Road/Hall County	Widening
GH-046	0013574	3-4	SR 323/Gillsville Highway from SR 11/US 129/Athens Highway to SR 82/Holly Springs Road	Widening
GH-056	0007170	1	SR 136/Price Road at Chestatee River	Bridges
GH-084	0001821	3	McEver Road from SR 347/Lanier Islands Parkway to CS 537/Gainesville Street	Widening
GH-085	0010212	1	SR 53/Dawsonville Hwy Westbound at Chattahoochee River	Bridges
GH-100		3	SR 369/Browns Bridge Rd. Operations- from McEver Road to Forsyth County Line	Roadway Operations
GH-102	0013086	3-4	I-85 at SR 60 - New Interchange	Interchange
GH-103		2	Athens Highway at Chestnut Street Operations	Intersection
GH-104		1	Dawsonville Hwy/SR 53 at McEver Road Operations	Intersection
GH-105		2	EE Butler Pkwy/Athens St at MLK Jr. Blvd Improvements	Intersection
GH-109	0013545	1	I-85 from North of SR 53 to North of SR 11 / US 129	Widening
GH-111		2	SR 60/Candler Road from South of I-985 To SR 124	Widening
GH-112		2	SR 369/Jesse Jewell Parkway	Widening
GH-113	0015752	1	Oak Tree Drive - Operations	Roadway Operations
GH-114		3	EE Butler Parkway/Athens Highway/US 129 Capacity	Widening
GH-115	0008434	4-UF	SR 53 from I-85 to Tapp Wood Road	Widening
GH-116	0013922	1	I-985 at CS 991/Elachee Road	Bridges
GH-119	0015551	1	SR 60/Thompson Bridge Road at Chattahoochee River	Bridges
GH-121		1	Green Street Improvements	Roadway Operations
GH-123	110610	1	I-85 from I-985 To North of SR 53	Widening
GH-124	0015702	1	SR 53/Dawsonville Hwy from Ahaluna Drive to Shallowford Road	Operational Improvement
GH-125	0015917	1	SR 60/Green Street at SR 11 Business/NE Riverside Drive	Roundabout
GH-126	0015918	1	SR 60/Greet Street at CS 898/Academy Street	Roundabout
GH-127	0016166	1	SR 124 at SR 60 & CR 17/Sam Freeman Road	Roundabout
GH-128		2	SR 60/Candler Rd at Fullenwider Road Intersection Improvement	Intersection Improvement
GH-129	0016616	3	SR 13 at I-985 & at CR 527/Thurmon Tanner Parkway	Operational Improvement
GH-130	0013762	3	SR 60 from SR 400 to Yellow Creek Road	Widening
GH-131		3-4	I-985 from SR 53/Winder Highway to Howard Road	Widening